

CLOVER PARK TECHNICAL COLLEGE

BY THE NUMBERS

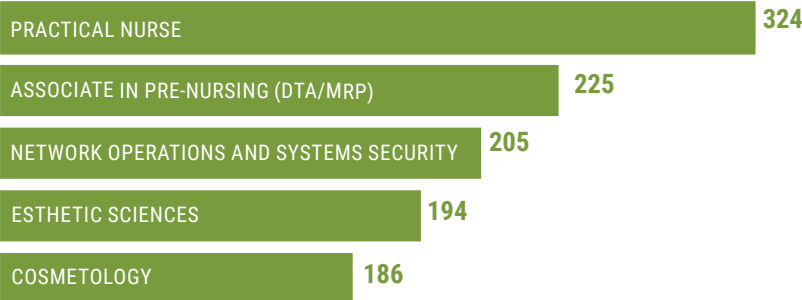
ACADEMIC YEAR 2020-2021*

Source: Institutional Effectiveness & Accreditation
*All data are for the entire academic year.

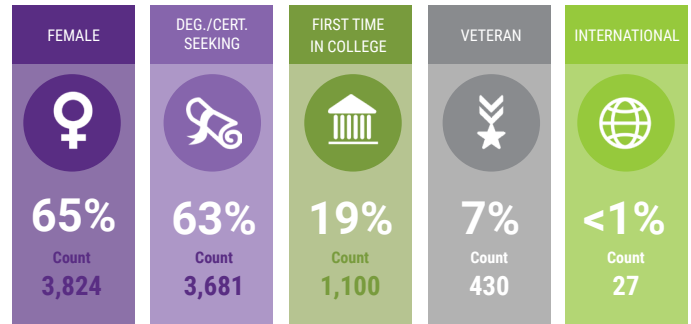
ENROLLMENT

Headcount	Total FTE	State-funded Head Count	State-funded FTE
5844	3403	5284	3052

HIGHEST ENROLLING PROGRAMS*



STUDENT CHARACTERISTICS




Race	Count	%	Race	Count	%
White	2,655	45%	AK Native & Amer Indian	52	1%
Asian	420	7%	African American	745	13%
Not reported	405	7%	Native HI & Pac Islander/ Other Pac Isl	130	2%
Multi-Racial	581	10%	Other Race	29	0%
Hispanic	832	14%			

*Race demographics do not add up to 100% since optional self-reporting allows for more than one selection.

COMPLETION AWARDS

TOTAL DEGREES & CERTIFICATES: 2,062




Associate of Applied Technology/ Associate of Applied Science - Transfer Degree	564 (30.6%)
Certificate > or = 45 Credits	301 (16.3%)
Certificate < 45 Credits	898 (48.7%)
Baccalaureate	7 (0.4%)
Apprenticeship	34 (1.8%)
High School Equivalency	41 (2.2%)

AAT/AAS (1, T) Certs > or = 45 CR. (2,3)
Certs < 45 CR. (4,9) High School (6,7)

SBCTC Data Warehouse Completion Tables award exit codes:

ENROLLMENT BY SCHOOL

HEADCOUNT

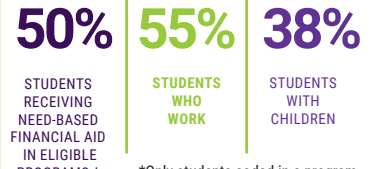


Basic Skills	883
School Of Health And Human Development	687
School Of Science, Technology, Engineering, And Design	601
School Of Business And Personal Services	597
School Of Automotive And Trades	423
School Of Aerospace And Aviation	213
School Of Nursing	159
School Of Advanced Manufacturing	133

FINANCIAL AID

Federal Grants*	\$4,737,589.21
State Grants	\$2,929,696.49
Workforce Development Grants	\$1,640,724.26
Direct Stafford Loans	\$2,302,898.00
Other Scholarships	\$228,789.24
Foundation Scholarships	\$119,836.64
Work Study	\$134,457.50

*Includes Pell Grant, FSEOG, EFSEOG, CCAMPIS, Perkins excludes all HEERF funds



*Only students coded in a program eligible for need based aid

FINANCES

Operating Budget	\$36,651,081
Resident Required Tuition and Fees For 15 credits	\$1,398.85

MISCELLANEOUS



FACULTY/STAFF DEMOGRAPHICS

FULL-TIME FACULTY: 58
PART-TIME FACULTY: 35

FULL-TIME STAFF: 51
PART-TIME STAFF: 0



FULL-TIME FACULTY: 66
PART-TIME FACULTY: 43

FULL-TIME STAFF: 123
PART-TIME STAFF: 6

TOTALS

FACULTY: 202 STAFF: 180 FEMALE: 62% FACULTY OF COLOR: 16% STAFF OF COLOR: 24%