

# CLOVER PARK TECHNICAL COLLEGE

ACADEMIC YEAR 2022-2023\*

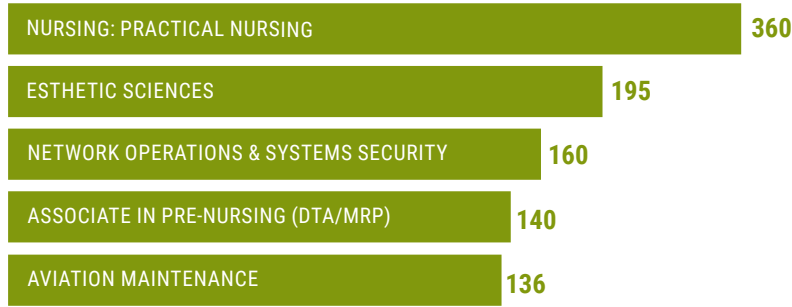
## BY THE NUMBERS

Source: Institutional Effectiveness & Accreditation  
\*All data are for the entire academic year.

### ENROLLMENT

Headcount	Total FTE	State-funded Head Count	State-funded FTE
5273	3152	4654	2687

### HIGHEST ENROLLING PROGRAMS\*



### COMPLETION AWARDS

TOTAL DEGREES & CERTIFICATES: 914

Associate of Applied Technology/  
Associate of Applied Science  
-Transfer Degree  
**428 (46.8%)**

Certificate > or = 45 Credits  
**150 (16.4%)**

Certificate < 45 Credits  
**160 (17.5%)**

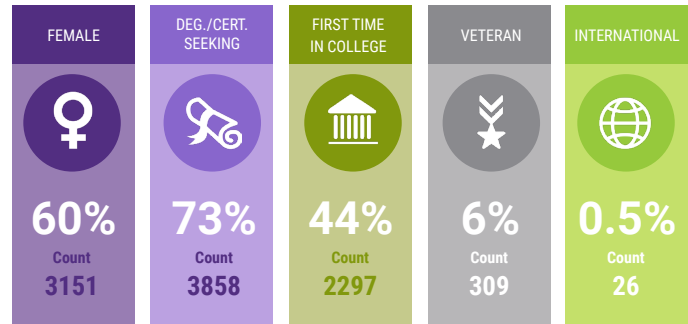
Baccalaureate  
**17 (1.9%)**

High School Equivalency  
**159 (17.4%)**

AAT/AAST (1, T)      Certs > or = 45 CR. (2,3)  
Certs < 45 CR. (4,9)      High School (6,7)

SBCTC Data Warehouse Completion Tables award exit codes:

### STUDENT CHARACTERISTICS



Race	Count	%	Race	Count	%
White	2108	40%	Alaska Native & American Indian	28	1%
Asian	382	7%	African American	681	13%
Not Reported	568	11%	Native Hawaiian/Pacific Islander	81	2%
Multi-Racial	476	9%			
Hispanic	987	19%			

\*Race demographics do not add up to 100% since optional self-reporting allows for more than one selection.

### ENROLLMENT BY SCHOOL

#### HEADCOUNT

School of Health and Human Development	556
School of Science, Technology, Engineering, and Design	586
School of Business and Personal Services	557
School of Automotive and Trades	344
School of Aerospace and Aviation	228
School of Nursing	195
School of Advanced Manufacturing	135

### FINANCIAL AID

Federal Grant*	\$3,233,335.00
Federal Loans	\$1,106,774.00
Other grants	\$228,526.00
Other scholarship	\$220,022.00
State Loans	\$205,718.00
Institutional Grant	\$155,445.00
Private Loans	\$58,803.00

**37%** STUDENTS RECEIVING NEED-BASED FINANCIAL AID IN ELIGIBLE PROGRAMS.\*

**41%** STUDENTS WITH CHILDREN

\*Includes PELL GRANT, FSEOG, EFSEOG, CCAMPIS excludes all HEERF funds.

\*Only students coded in a program eligible for need based aid

### FINANCES

Operating Budget	\$39,061,438
Resident Required Tuition and Fees For 15 credits	\$1,504.00

### MISCELLANEOUS



### FACULTY/STAFF DEMOGRAPHICS

FULL-TIME FACULTY: 64  
PART-TIME FACULTY: 32

FULL-TIME STAFF: 65  
PART-TIME STAFF: 5



FULL-TIME FACULTY: 64  
PART-TIME FACULTY: 50

FULL-TIME STAFF: 127  
PART-TIME STAFF: 9

### TOTALS

FACULTY: 212 STAFF: 204 FEMALE: 57% FACULTY OF COLOR: 24% STAFF OF COLOR: 32%