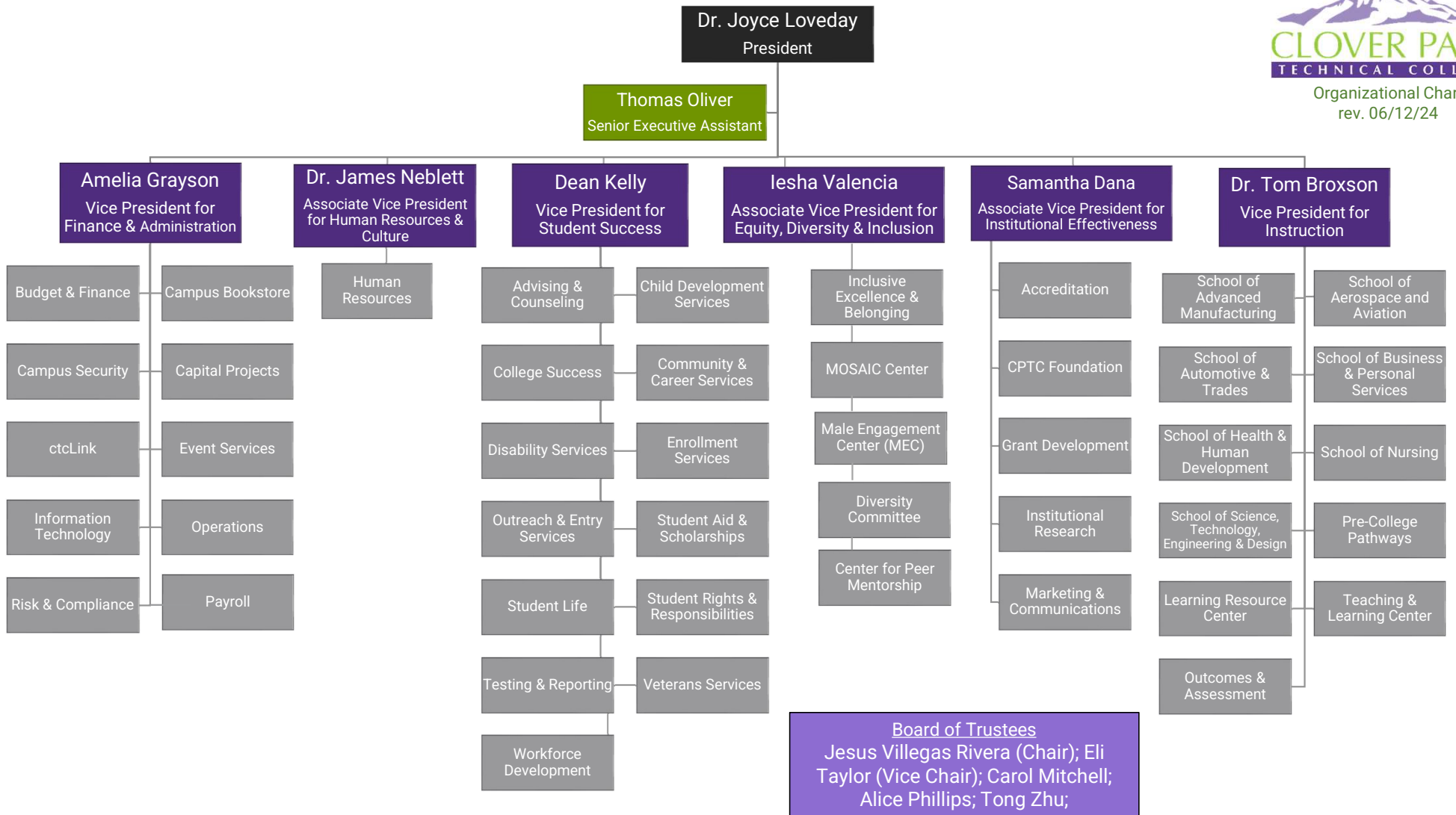


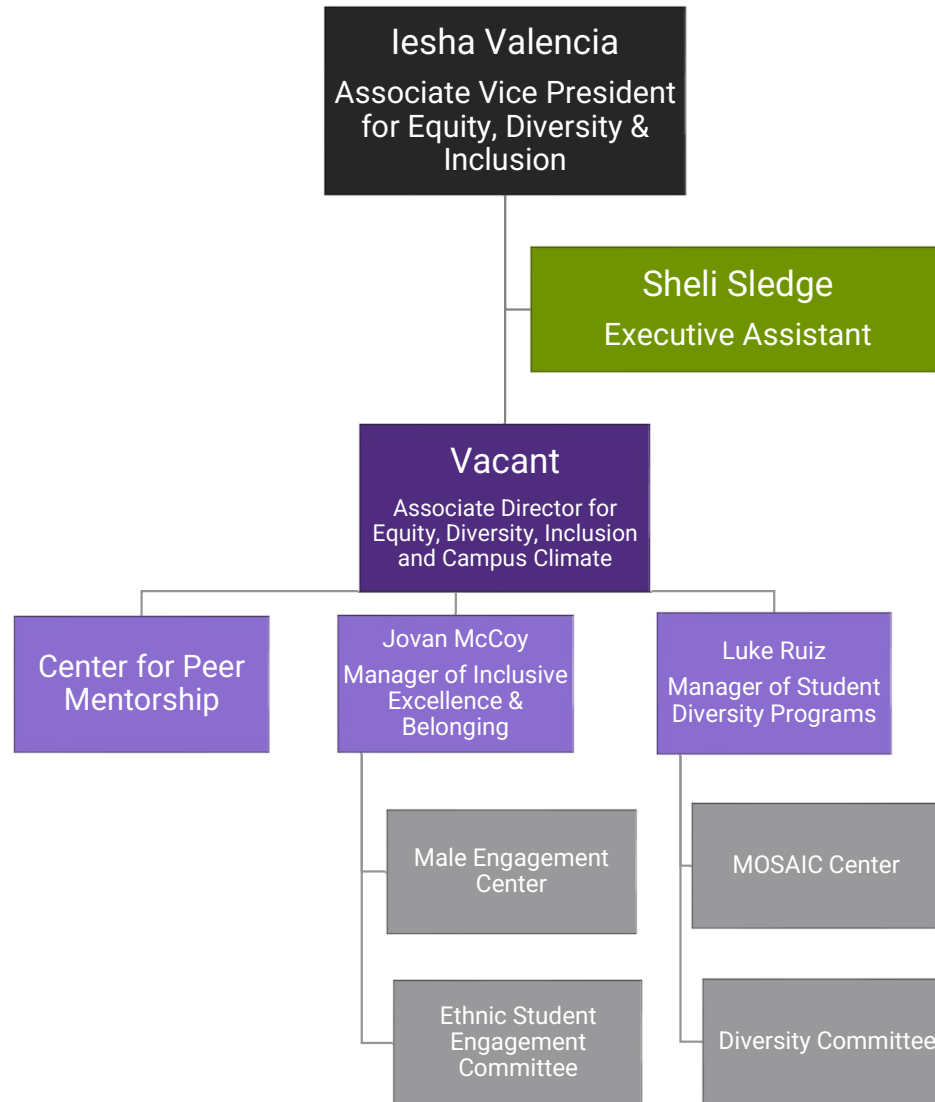


Organizational Chart  
rev. 06/12/24



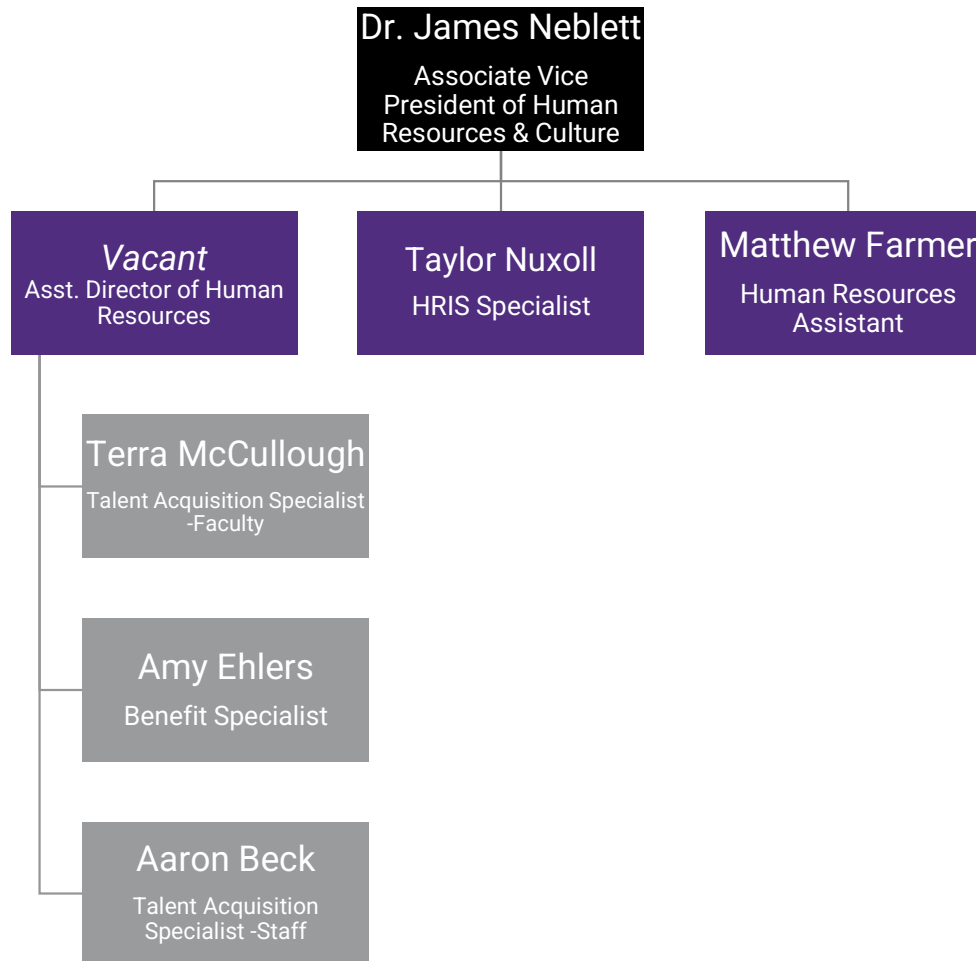


Division of  
Equity, Diversity & Inclusion  
Organizational Chart  
rev. 06/13/24



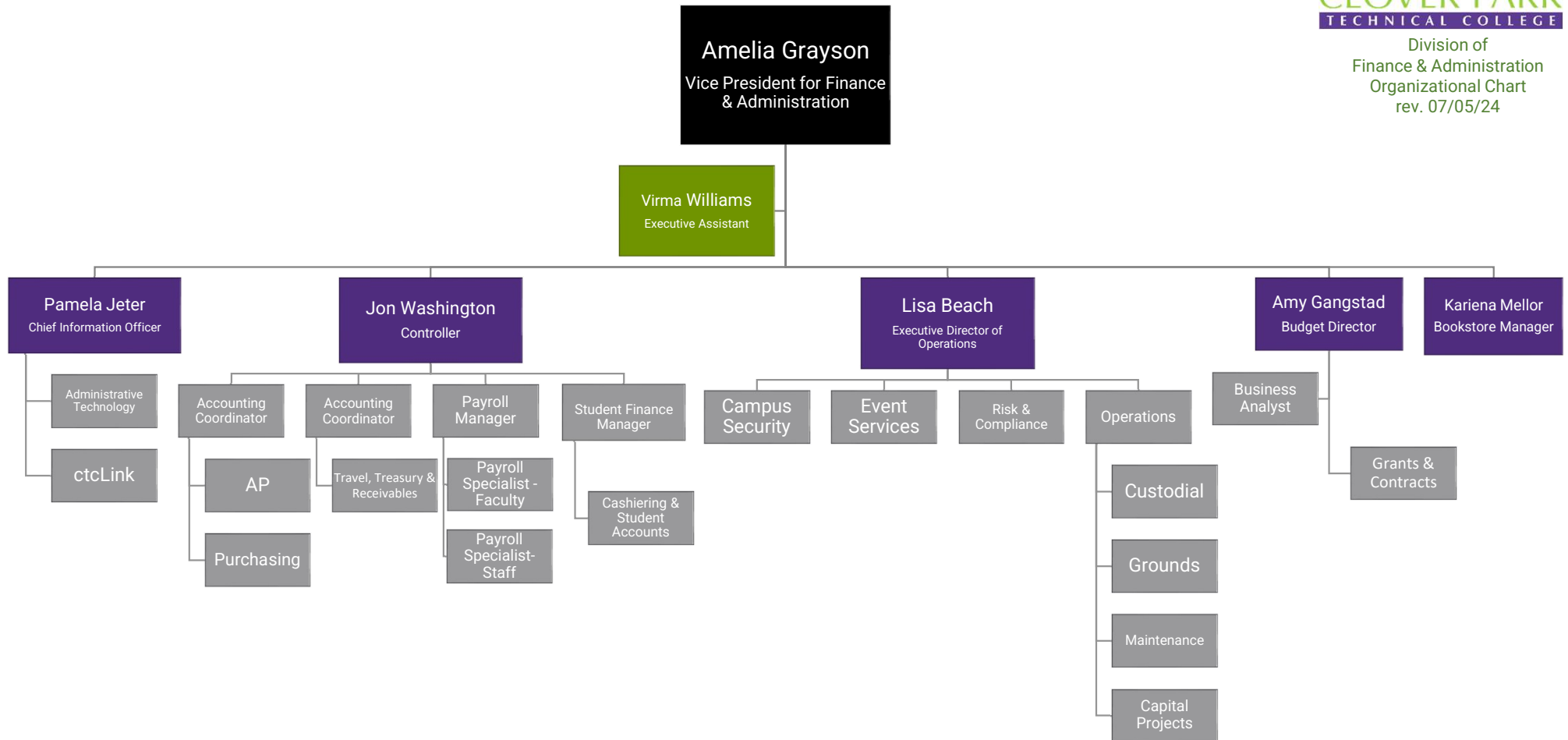


Division of  
Human Resources & Culture  
Organizational Chart  
rev. 07/05/24



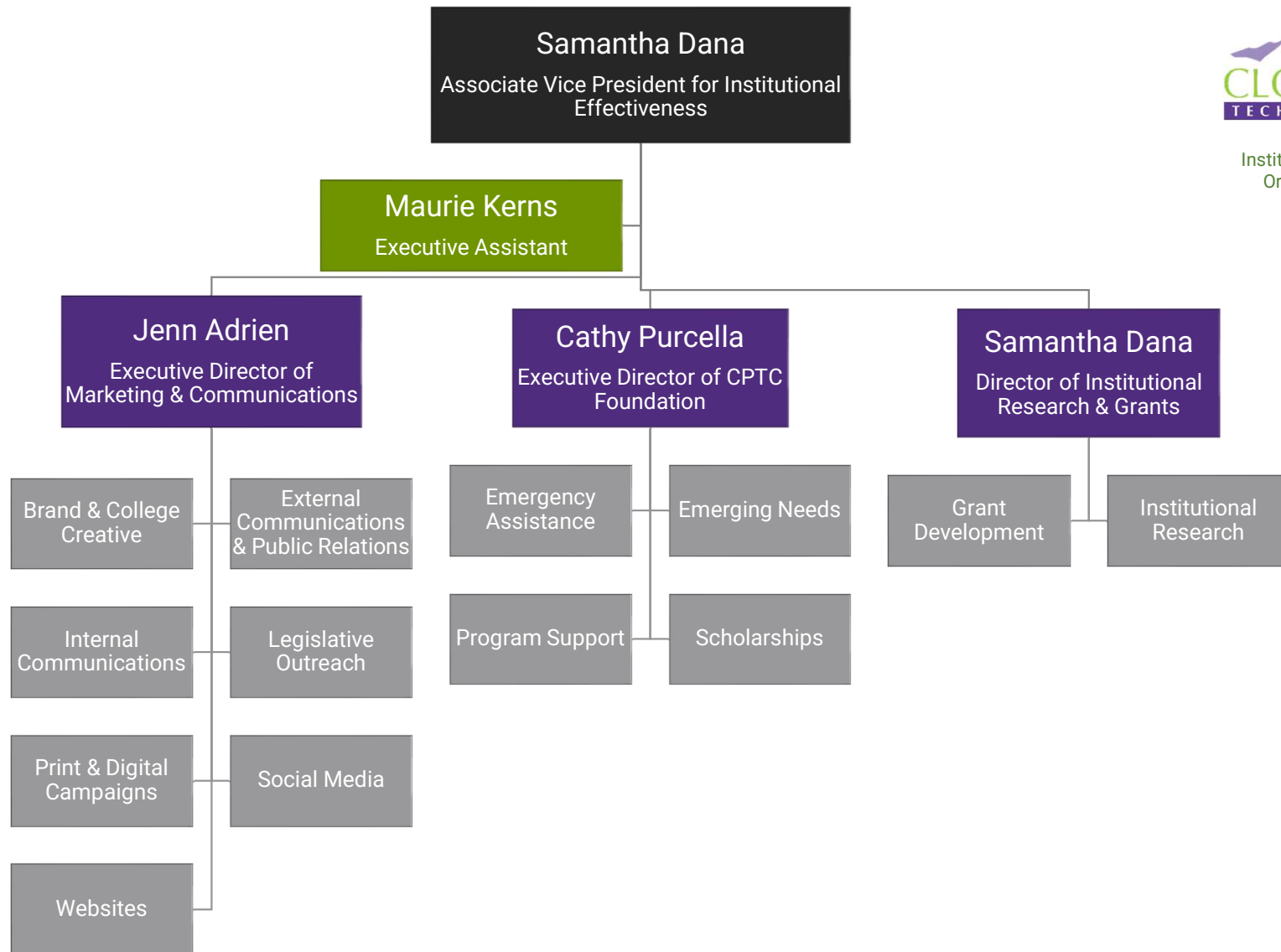


Division of  
Finance & Administration  
Organizational Chart  
rev. 07/05/24



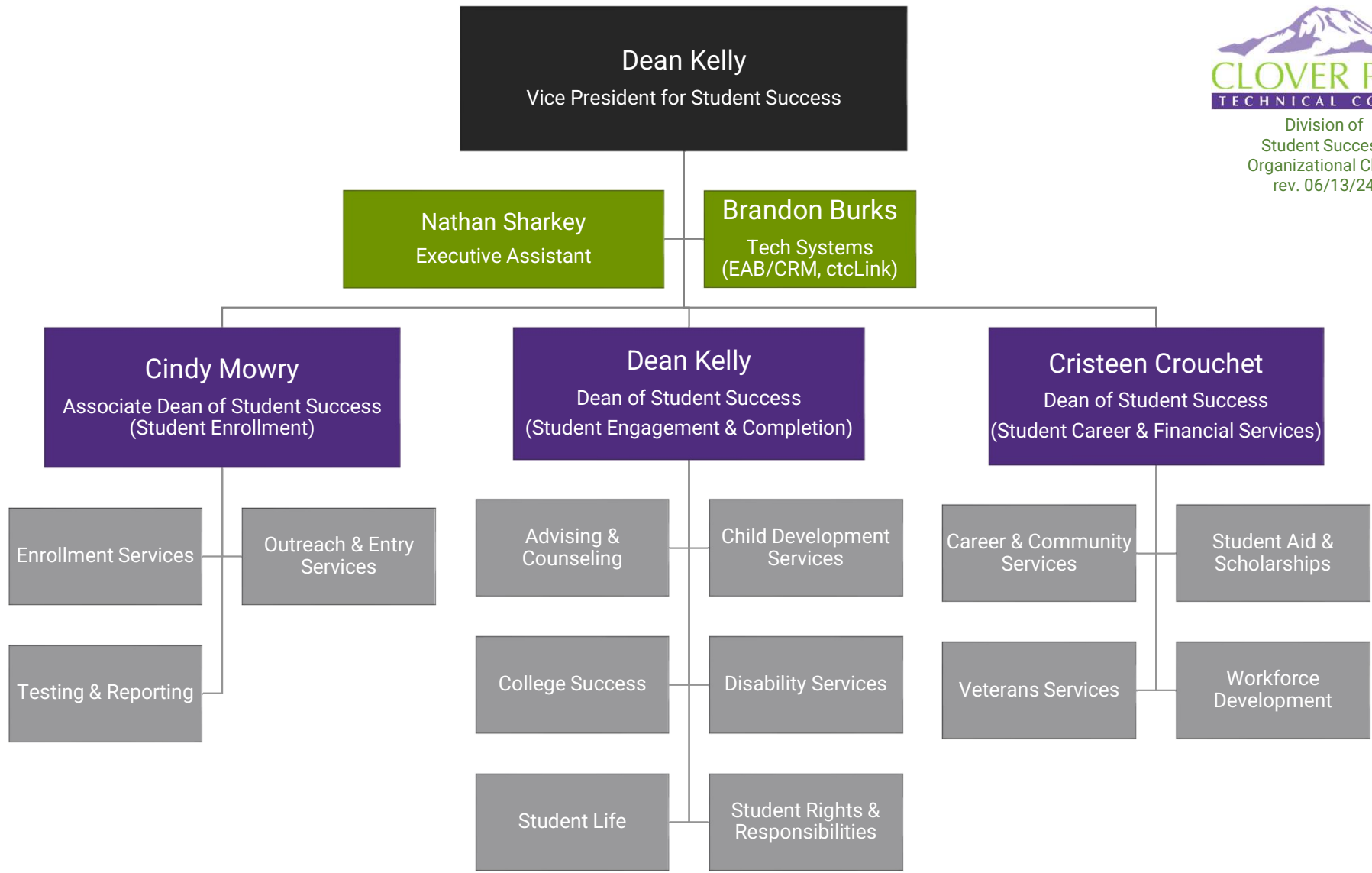


Division of  
Institutional Effectiveness  
Organizational Chart  
rev. 05/17/2024





Division of  
Student Success  
Organizational Chart  
rev. 06/13/24





Division of Instruction  
Organizational Chart  
rev. 12/5/23

**Vice President for Instruction**  
Dr. Thomas Broxson

**Director of Teaching & Learning**  
Kristin Copeland  
Curriculum Design Specialists:  
Geoff Cain, Ronald Lethcoe  
Instructional Program Assistant:  
Carrie Foster

**Outcomes & Assessment  
Manager**  
Dr. Xue (Snowy) Zhang

**Executive Assistant**  
Sarah Harris

**Enrollment Data  
Specialist**  
Kristy Crosby

**cteLink Data  
Analyst**  
vacant

**LEARNING RESOURCE  
CENTER DIRECTOR:**  
TBD  
LRC Coordinator  
vacant

**ACADEMICS & DESIGN  
Dean of Instruction**  
Dr. Chris Chen  
Mahoney

**AERO / AVIA /  
MAIN / TECH  
Dean of Instruction**  
Dr. Claire  
Korschowski

**AUTO & TRADES  
Dean of Instruction**  
Lester Burkes

**CLIENT & BUSINESS/  
PERSONAL SERVICES  
Dean of Instruction**  
Michelle Hillesland

**HEALTH CARE  
Dean of Instruction**  
Jason Boatwright

**NURSING  
Dean of Instruction**  
Tiffany Smith-Fromm

**PRE-COLLEGE  
PATHWAYS  
Dean of Instruction**  
Jenna Pollock

**LRC Staff**  
Faculty librarians  
eLearning staff  
Library Technicians  
Computer Technology  
Specialist  
Tutoring Center staff

**Instructional  
Program  
Assistants**  
Laurie Albrecht  
Roxanne Sou

**Instructional  
Program Assistants**  
Maurie Kerns  
Donna McBride (South  
Hill Campus)

**Instructional  
Program  
Assistant**  
Dawn Schuler

**Instructional  
Program  
Assistant**  
Bijou Boerst

**Instructional  
Program  
Assistant**  
Christina Fontana

**Instructional  
Program  
Assistant**  
Sean McCullough

**Instructional  
Program  
Assistants**  
Brittany Bowman  
Karina Calzada

**Programs**  
Arts & Humanities  
Computer Applications  
English &  
Communications  
Mathematics  
Social Sciences  
DTA degrees  
  
Architectural  
Engineering Design  
Digital Entertainment  
Design & Production  
Graphic Technologies  
Interior Design  
BAS Interior Design  
  
**Support Staff**  
Bio lab tech  
Chem lab tech

**Programs**  
BAS Cybersecurity  
Computer Prog.  
Environ.Sci. & Tech.  
Network Ops/Syst Sec  
  
Aviation Maintenance  
Avionics  
Professional Pilot  
BAS Op. Management  
BAS META  
Mechatronics  
Nondestructive Testing  
Manufacturing Tech.  
  
**SHC Support Staff**  
Tool Room Tech:  
Lucy Schmidt  
Aircraft Mechanic: Matt  
Selstad  
Avia. Prog. Specialist:  
Terrie Shanko  
  
**Adv. Manufacturing**  
Instruction/Lab Support  
Tech: TBD  
  
**BAS Program Support**  
Career Pathway  
Specialist: Kristen Bate

**Programs**  
Auto Collision/  
Restoration  
Automotive Tech.  
Construction Tech.  
Low Voltage  
Electrician  
HVAC/Refrigeration  
Service Tech.  
Upholstery  
Welding  
Apprenticeship  
Development  
Perkins  
  
**Automotive Support  
Staff**  
Tool Room Tech: Jim  
Newcomer

**Programs**  
Accounting  
Cosmetology  
Culinary Arts  
Esthetic Science  
Massage Studies  
(inactive)  
Pastry Arts  
  
Retail Bus. Mgmt.  
Early Care & Education  
Day-care affil's  
  
**Support Staff**  
Receptionist:  
Kim Brown  
Cashier:  
Michelle Bishop

**Programs**  
Central Service/Sterile  
Processing  
Dental Assistant  
Health Unit Coord.  
Human Services  
Med. Histology Tech.  
Medical Lab Tech.  
Pharmacy Tech.  
Medical Assistant  
Surgical Tech.  
Core Allied Health  
  
**Support Staff**  
Clinical Placement  
Coordinator:  
Josie Meyer  
Histology lab tech  
Pharmacy lab tech  
Surg. Tech lab  
assistant

**Programs**  
Nursing Assistant  
Practical Nursing  
Registered Nursing  
  
**Support Staff**  
Nursing Placement  
Coord.: Judy Rose-  
Bungay (PT)  
NAC Coordinator  
(adjunct)

**Programs**  
Adult Basic Education  
English Language  
Acquisition (formerly  
ESL)  
GED  
HS + DIPLOMA  
I-BEST  
  
**Support Staff**  
Assessment/Data  
Specialist:  
Samantha Roman  
I-Best Program  
Specialist/ABE  
Navigator:  
Felicia Dennis  
Assessment/  
Data Tech.: Eun Ha Lee

**NORTHWEST CAREER  
& TECHNICAL HIGH  
SCHOOL (NWCTHS)**  
**Director**  
Lester Burkes  
  
**Support Staff**  
Faculty Office Asst.:  
TBD  
PT Office Support:  
Gretchen Engle