



Organizational Chart  
rev. 06/12/24

**Dr. Joyce Loveday**  
President

**Thomas Oliver**  
Senior Executive Assistant

**Amelia Grayson**  
Vice President for  
Finance & Administration

- Budget & Finance
- Campus Security
- ctcLink
- Information Technology
- Risk & Compliance
- Campus Bookstore
- Capital Projects
- Event Services
- Operations
- Payroll

**Dr. James Neblett**  
Associate Vice President  
for Human Resources &  
Culture

- Human Resources

**Dean Kelly**  
Vice President for  
Student Success

- Advising & Counseling
- College Success
- Disability Services
- Outreach & Entry Services
- Student Life
- Testing & Reporting
- Workforce Development
- Child Development Services
- Community & Career Services
- Enrollment Services
- Student Aid & Scholarships
- Student Rights & Responsibilities
- Veterans Services

**Iesha Valencia**  
Associate Vice President for  
Equity, Diversity & Inclusion

- Inclusive Excellence & Belonging
- MOSAIC Center
- Male Engagement Center (MEC)
- Diversity Committee
- Center for Peer Mentorship

**Samantha Dana**  
Associate Vice President for  
Institutional Effectiveness

- Accreditation
- CPTC Foundation
- Grant Development
- Institutional Research
- Marketing & Communications

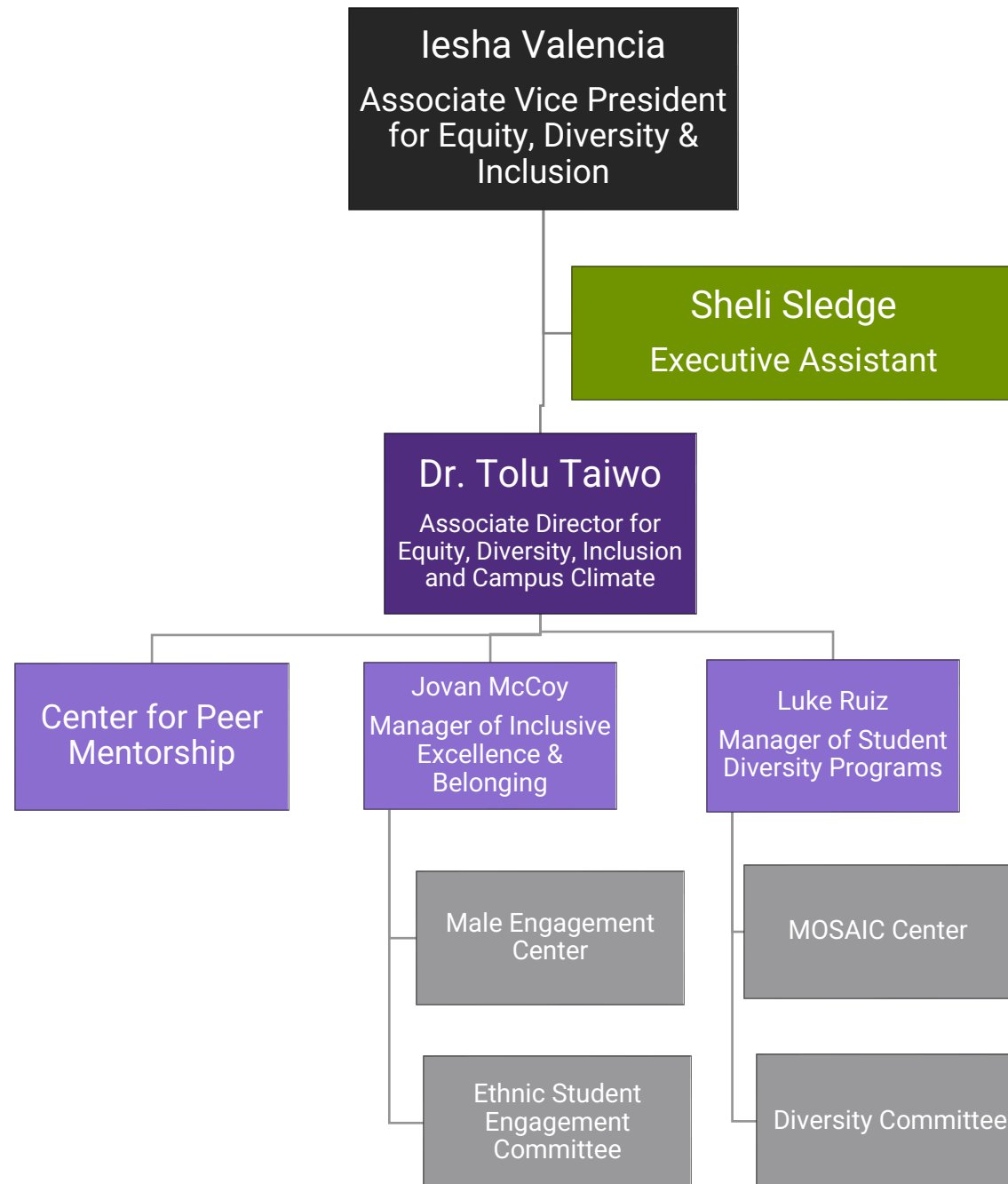
**Dr. Tom Broxson**  
Vice President for  
Instruction

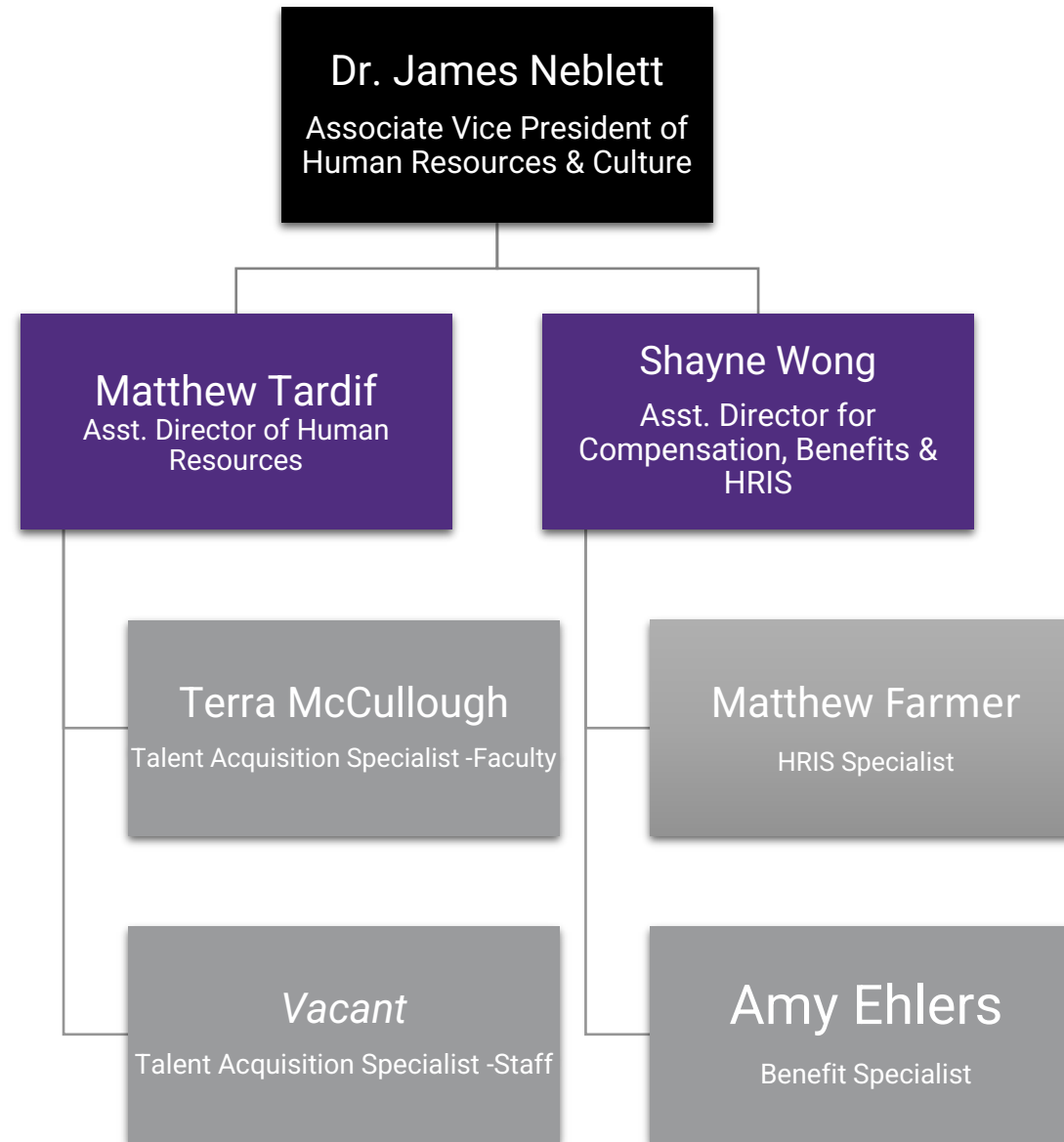
- School of Advanced Manufacturing
- School of Automotive & Trades
- School of Health & Human Development
- School of Science, Technology, Engineering & Design
- Learning Resource Center
- Outcomes & Assessment
- School of Aerospace and Aviation
- School of Business & Personal Services
- School of Nursing
- Pre-College Pathways
- Teaching & Learning Center

**Board of Trustees**  
Jesus Villegas Rivera (Chair); Eli Taylor (Vice Chair); Carol Mitchell; Alice Phillips; Tong Zhu;



Division of  
Equity, Diversity & Inclusion  
Organizational Chart  
rev. 11/4/24



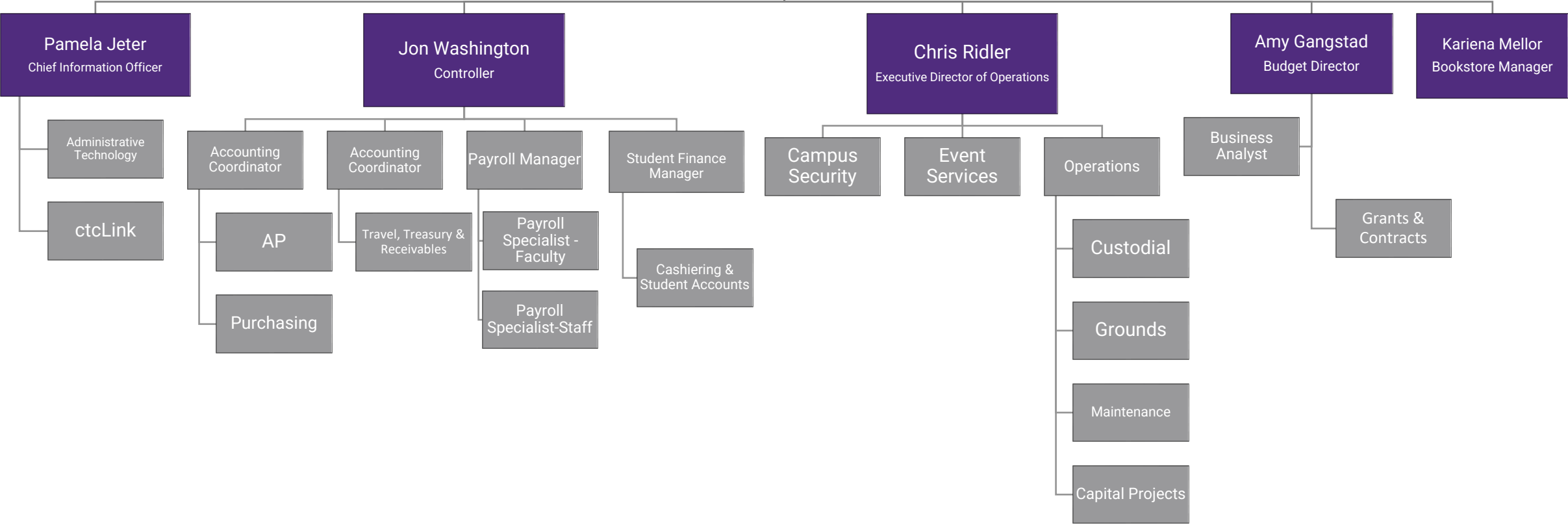




Division of  
Finance & Administration  
Organizational Chart  
rev. 12/10/24

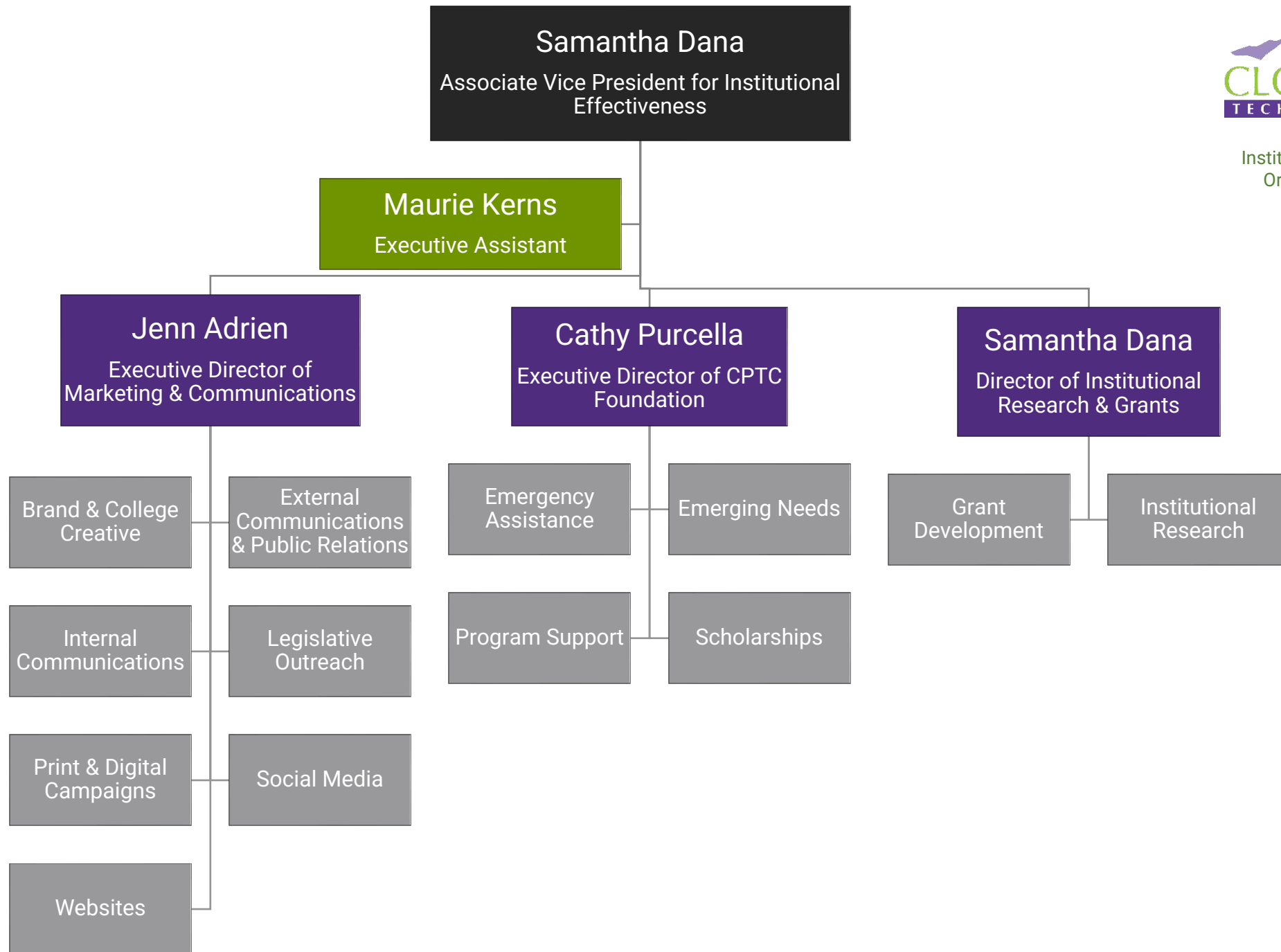
**Amelia Grayson**  
Vice President for Finance & Administration

**Virma Williams**  
Executive Assistant





Division of  
Institutional Effectiveness  
Organizational Chart  
rev. 05/17/2024





Division of  
Student Success  
Organizational Chart  
rev. 06/13/24

**Dean Kelly**  
Vice President for Student Success

**Nathan Sharkey**  
Executive Assistant

**Brandon Burks**  
Tech Systems  
(EAB/CRM, ctcLink)

**Cindy Mowry**  
Associate Dean of Student Success  
(Student Enrollment)

**Dean Kelly**  
Dean of Student Success  
(Student Engagement & Completion)

**Cristeen Crouchet**  
Dean of Student Success  
(Student Career & Financial Services)

Enrollment Services

Outreach & Entry  
Services

Testing & Reporting

Advising &  
Counseling

Child Development  
Services

College Success

Disability Services

Student Life

Student Rights &  
Responsibilities

Career & Community  
Services

Student Aid &  
Scholarships

Veterans Services

Workforce  
Development

# Vice President for Instruction Dr. Thomas Broxson



Division of Instruction  
Organizational Chart  
rev. 10/21/24

**Dean of Library and Learning Innovation**  
Kristin Copeland  
Curriculum Design

Instructional Program Asst  
Carrie Foster

Specialists:  
Geoff Cain, Ronald Lethcoe

Instructional Designer  
James Schumate

**LRC Staff**  
Faculty librarians  
eLearning staff  
Library Technicians  
Computer Technology Specialist

Faculty Leads:  
Dionna Faherty  
Shawn Geary  
Dion Alexander (.5)

Student Technology Coordinator  
Sean Thompson

Tutoring Center Coord.  
Dion Alexander  
Tutoring Center Staff

**Outcomes & Assessment Manager**  
Dr. Xue (Snowy) Zhang

Faculty Leads  
Alan Vargo  
Derek Faust  
Dion Alexander (.5)

**Executive Assistant**  
Sarah Harris

**Manager of Instruction Budget and Scheduling**  
Jaye Sullivan

Enrollment Data Specialist  
Kristy Crosby

**Executive Director of the Center for Professional Development**  
Donald Sosnowski

**Corporate Education**  
Donald Sosnowski

**Continuing Professional Education**  
Petra Perkins

**ACADEMICS & DESIGN**  
Dean of Instruction  
Dr. Chris Chen Mahoney

**AERO / AVIA / MAIN / TECH**  
Dean of Instruction  
Dr. Claire Korschinowski

**AUTOMOTIVE & TRADES**  
Dean of Instruction  
Lester Burkes

**CLIENT & BUSINESS/ PERSONAL SERVICES**  
Dean of Instruction  
Michelle Hillesland

**HEALTHCARE**  
Dean of Instruction  
Jason Boatwright

**NURSING**  
Dean of Instruction  
Tiffany Smith-Fromm

**PRE-COLLEGE PATHWAYS**  
Dean of Instruction  
Jenna Pollock

**Instructional Program Assistants**  
Roxanne Sou  
VACANT

**Instructional Program Assistants**  
Angela Alapai  
Donna McBride - South Hill Campus

**Instructional Program Assistant**  
Lisa Plair

**Instructional Program Assistant**  
Bijou Boerst

**Instructional Program Assistant**  
Christina Fontana

**Instructional Program Assistant**  
Sean McCullough

**Instructional Program Assistants**  
Brittany Bowman  
Karina Calzada

**Programs**  
Arts & Humanities  
Computer Applications  
English & Communications  
Mathematics  
Natural Sciences  
Social Sciences  
DTA degrees

Architectural  
Engineering Design  
Design & Production  
Graphic Design Tech.  
Interior Design  
BAS Interior Design

**Support Staff**  
Bio lab tech  
Chem lab tech

**Programs**  
BAS Cybersecurity  
BS Computer Science  
Computer Prog.  
BAS Environmental Sciences  
Environ. Sci. & Tech.  
Network Ops/Syst Sec  
Aviation Maintenance  
Avionics  
Professional Pilot  
BAS Op. Management  
BAS META  
Mechatronics  
Nondestructive Testing  
Manufacturing Tech.

**Faculty Leads**  
Aerospace/Aviation  
Greg Doyon  
Advanced Manufacturing  
Julie Watts

**SHC Support Staff**  
Tool Room Tech:  
Lucy Schmidt  
Aircraft Mechanic: Matt Selstad  
Avia. Prog. Specialist:  
Terrie Shanko

**Adv. Manufacturing**  
Lab Tech: Ian Brandt  
Navigator: Eden Greer

**BAS Program Support**  
Career Pathway Specialist  
Kristen Bate

**Programs**  
Auto Collision/Restoration  
Automotive Tech.  
Construction Tech.  
Low Voltage Electrician  
HVAC/Refrigeration Service Tech.  
Upholstery  
Welding  
Apprenticeship Development  
Perkins

**Automotive Support Staff**  
Tool Room Tech: Jim Newcomer

**Programs**  
Accounting  
Cosmetology  
Culinary Arts  
Esthetic Science  
Massage Studies (inactive)  
Pastry Arts

Retail Bus. Mgmt.  
Early Care & Education  
Day-care affil's

**Support Staff**  
Receptionist:  
Kim Brown  
Cashier:  
Michelle Bishop

**Programs**  
Central Service/Sterile Processing  
Dental Assistant  
Health Unit Coord.  
Human Services  
Med. Histology Tech.  
Medical Lab Tech.  
Pharmacy Tech.  
Medical Assistant  
Surgical Tech.  
Core Allied Health

**Faculty Lead**  
Taylyr Breiner

**Support Staff**  
Clinical Placement Coordinator  
Josie Meyer  
Histology lab tech  
Pharmacy lab tech  
Surg. Tech lab assistant

**Programs**  
Nursing Assistant  
Practical Nursing  
Registered Nursing

**Faculty Lead**  
Irada Dadashova

**Support Staff**  
Nursing Placement Coordinator  
Judy Rose-Bungay (PT)  
Director of NAC  
Rosalia Watson (adjunct)

**Programs**  
English Language Acquisition (ESL)  
HS + DIPLOMA GED  
Brush-Up Adult Ed  
I-BEST

**Faculty Lead**  
Diane Follett

**Support Staff**  
Data Specialist:  
Samanda Roman  
LEP Specialist:  
Eun Ha Lee  
LEP Specialist:  
Larysa Nazarenko  
Navigator:  
Felicia Dennis  
Counselor:  
Riabelle Vivas  
Entry Services: vacant  
PT ESL Support:  
Koffi Monde

**NORTHWEST CAREER & TECHNICAL HIGH SCHOOL (NWCTHS)**

**Support Staff**  
Associate Director:  
Amy Robertson-Bullen  
Faculty Office Assistant:  
Stephanie Castillo  
Entry Services:  
Jessica Vazquez  
Counselors:  
Sean Briggs, Jane Davis,  
Megan Fuhlman