



Organizational Chart
rev. 06/12/24

Dr. Joyce Loveday
President

Thomas Oliver
Senior Executive Assistant

Amelia Grayson
Vice President for
Finance & Administration

- Budget & Finance
- Campus Security
- ctcLink
- Information Technology
- Risk & Compliance
- Campus Bookstore
- Capital Projects
- Event Services
- Operations
- Payroll

Dr. James Neblett
Associate Vice President
for Human Resources &
Culture

- Human Resources

Dean Kelly
Vice President for
Student Success

- Advising & Counseling
- College Success
- Disability Services
- Outreach & Entry Services
- Student Life
- Testing & Reporting
- Workforce Development
- Child Development Services
- Community & Career Services
- Enrollment Services
- Student Aid & Scholarships
- Student Rights & Responsibilities
- Veterans Services

Iesha Valencia
Associate Vice President for
Equity, Diversity & Inclusion

- Inclusive Excellence & Belonging
- MOSAIC Center
- Male Engagement Center (MEC)
- Diversity Committee
- Center for Peer Mentorship

Samantha Dana
Associate Vice President for
Institutional Effectiveness

- Accreditation
- CPTC Foundation
- Grant Development
- Institutional Research
- Marketing & Communications

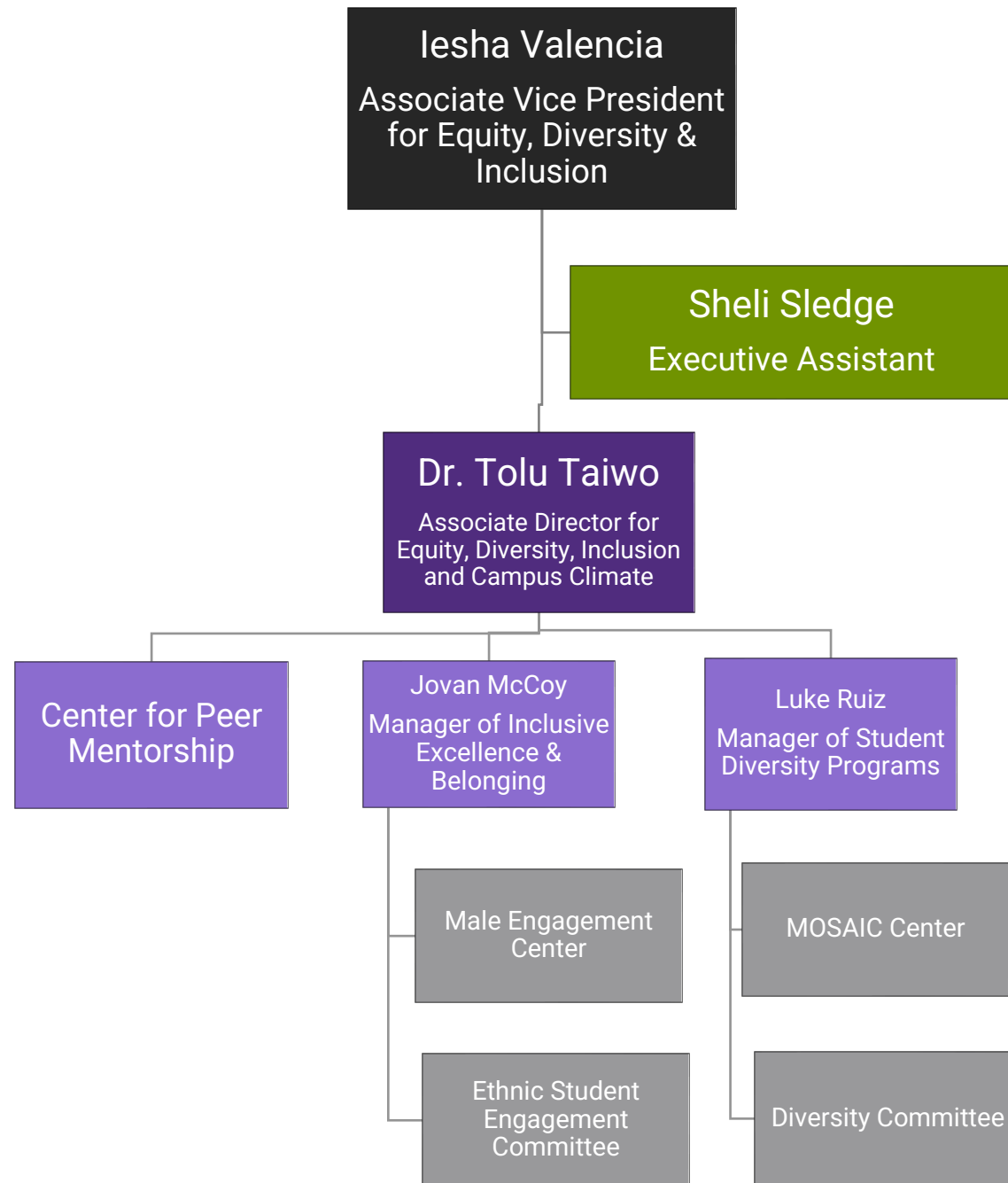
Dr. Tom Broxson
Vice President for
Instruction

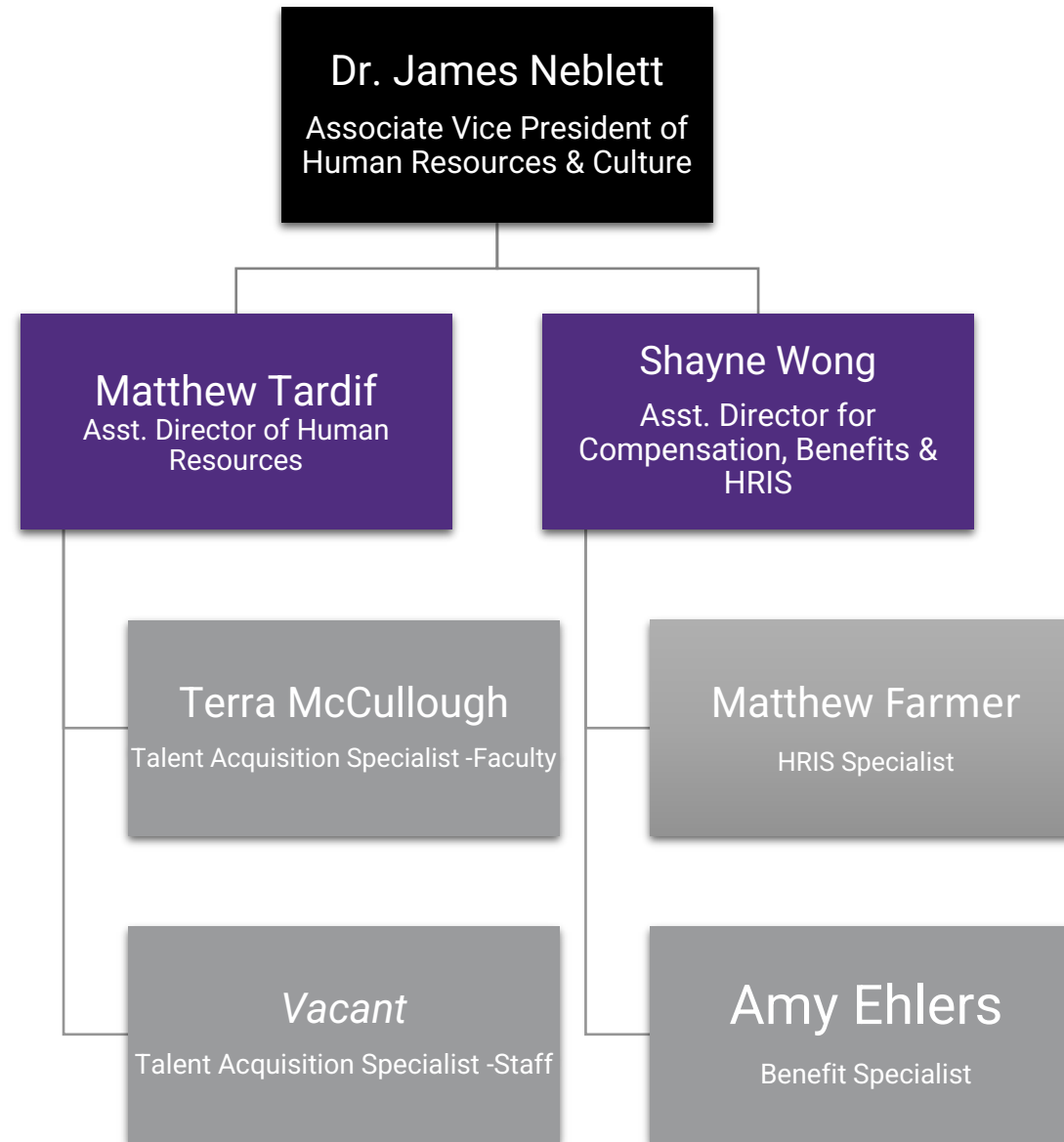
- School of Advanced Manufacturing
- School of Automotive & Trades
- School of Health & Human Development
- School of Science, Technology, Engineering & Design
- Learning Resource Center
- Outcomes & Assessment
- School of Aerospace and Aviation
- School of Business & Personal Services
- School of Nursing
- Pre-College Pathways
- Teaching & Learning Center

Board of Trustees
Jesus Villegas Rivera (Chair); Eli Taylor (Vice Chair); Carol Mitchell; Alice Phillips; Tong Zhu;



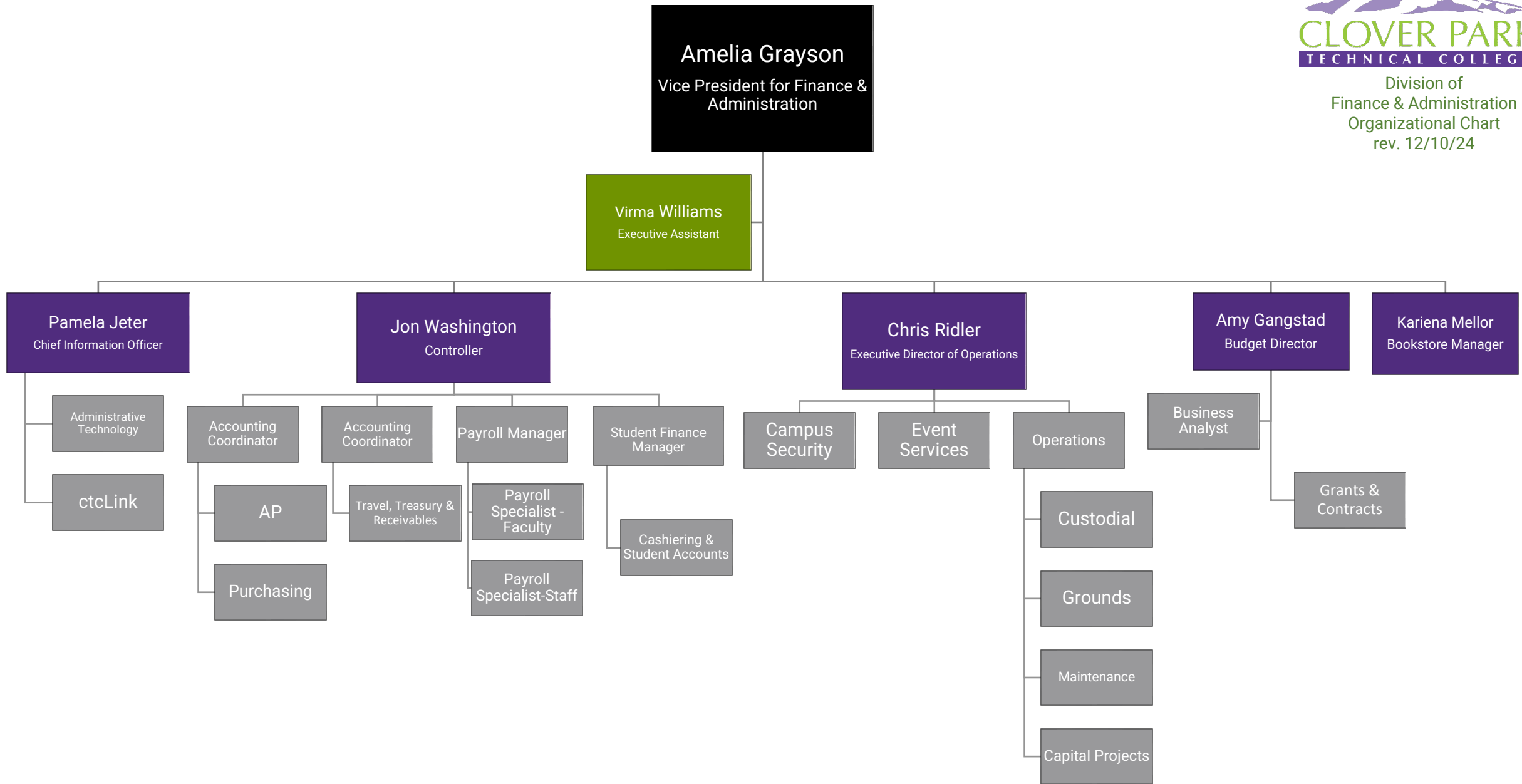
Division of
Equity, Diversity & Inclusion
Organizational Chart
rev. 11/4/24





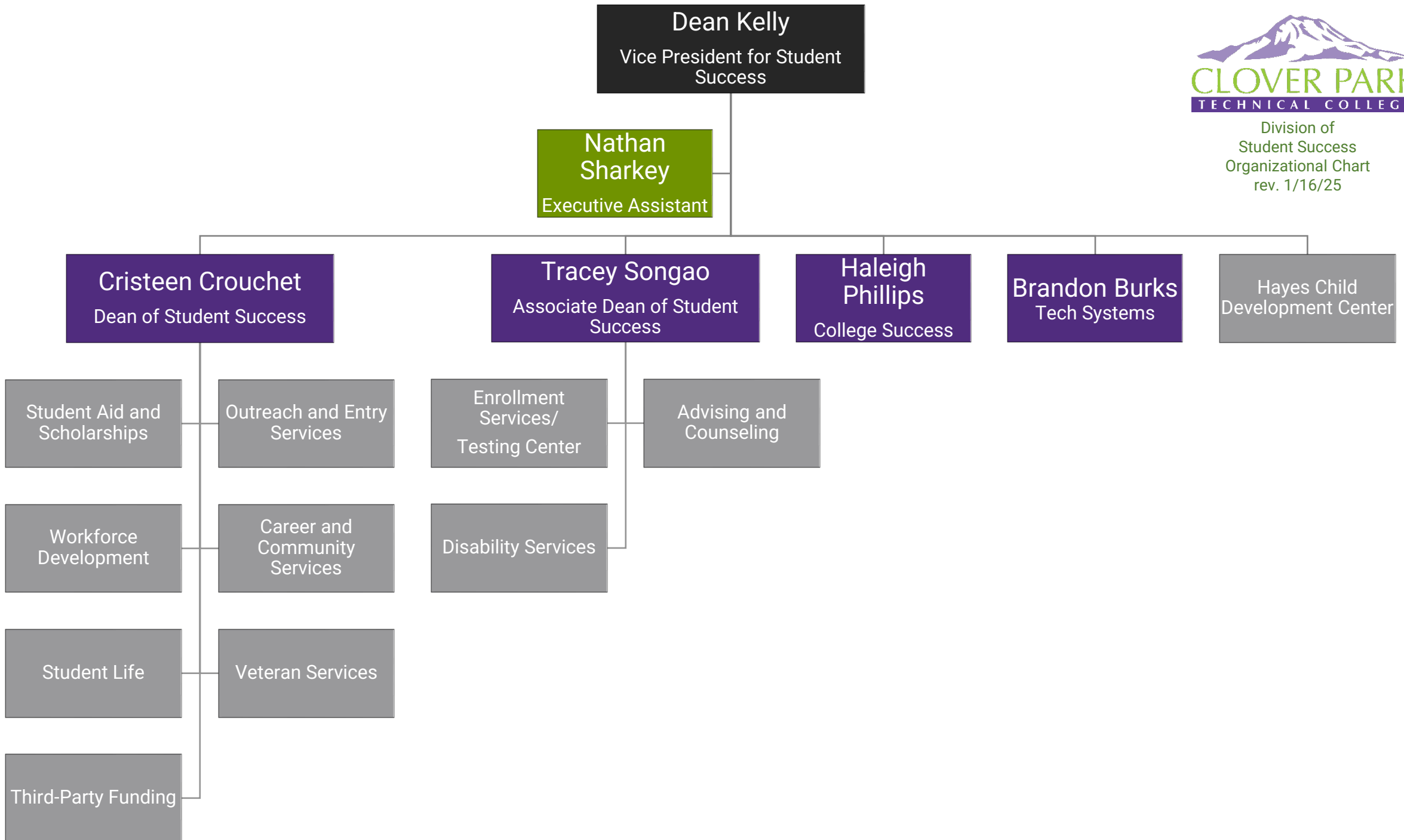


Division of
Finance & Administration
Organizational Chart
rev. 12/10/24



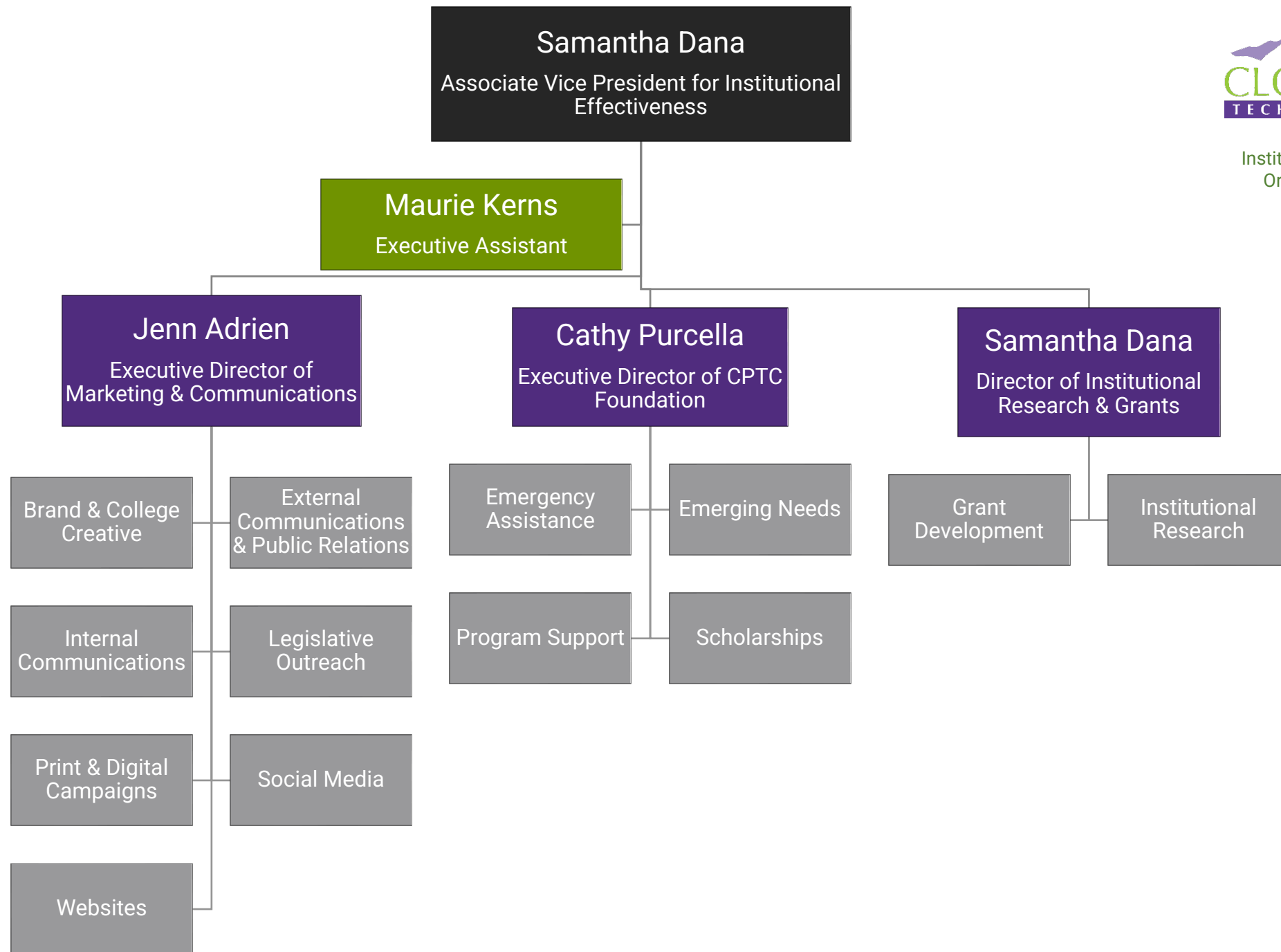


Division of
Student Success
Organizational Chart
rev. 1/16/25





Division of
Institutional Effectiveness
Organizational Chart
rev. 05/17/2024



Vice President for Instruction
Dr. Thomas Broxson



Division of Instruction
 Organizational Chart
 rev. 10/21/24

Dean of Library and Learning Innovation
 Kristin Copeland
 Curriculum Design

Instructional Program Asst
 Carrie Foster

Specialists:
 Geoff Cain, Ronald Lethcoe

Instructional Designer
 James Schumate

LRC Staff
 Faculty librarians
 eLearning staff
 Library Technicians
 Computer Technology
 Specialist

Faculty Leads:
 Dionna Faherty
 Shawn Geary
 Dion Alexander (.5)

Student Technology
 Coordinator
 Sean Thompson

Tutoring Center Coord.
 Dion Alexander
 Tutoring Center Staff

**Outcomes & Assessment
 Manager**
 Dr. Xue (Snowy) Zhang

Faculty Leads
 Alan Vargo
 Derek Faust
 Dion Alexander (.5)

Executive Assistant
 Sarah Harris

Manager of Instruction Budget and Scheduling
 Jaye Sullivan

Enrollment Data Specialist
 Kristy Crosby

**Executive Director of the Center for
 Professional Development**
 Donald Sosnowski

Corporate Education
 Donald Sosnowski

**Continuing
 Professional Education**
 Petra Perkins

**ACADEMICS &
 DESIGN**
Dean of Instruction

Dr. Chris Chen
 Mahoney

**AERO / AVIA /
 MAIN / TECH**
Dean of Instruction
 Dr. Claire
 Korschinowski

**AUTOMOTIVE &
 TRADES**
Dean of Instruction
 Lester Burkes

**CLIENT & BUSINESS/
 PERSONAL
 SERVICES**
Dean of Instruction
 Michelle Hillesland

HEALTHCARE
Dean of Instruction
 Jason Boatwright

NURSING
Dean of Instruction
**Tiffany Smith-
 Fromm**

**PRE-COLLEGE
 PATHWAYS**
Dean of Instruction
 Jenna Pollock

**Instructional
 Program
 Assistants**
 Roxanne Sou
 VACANT

**Instructional
 Program Assistants**
 Angela Alapai
 Donna McBride -
 South Hill Campus

**Instructional
 Program
 Assistant**
 Lisa Plair

**Instructional
 Program
 Assistant**
 Bijou Boerst

**Instructional
 Program
 Assistant**
 Christina Fontana

**Instructional
 Program
 Assistant**
 Sean McCullough

**Instructional
 Program
 Assistants**
 Brittany Bowman
 Karina Calzada

Programs
 Arts & Humanities
 Computer
 Applications
 English &
 Communications
 Mathematics
 Natural Sciences
 Social Sciences
 DTA degrees

Architectural
 Engineering Design
 Design & Production
 Graphic Design Tech.
 Interior Design
 BAS Interior Design

Support Staff
 Bio lab tech
 Chem lab tech

Programs
 BAS Cybersecurity
 BS Computer Science
 Computer Prog.
 BAS Environmental
 Sciences
 Environ. Sci. & Tech.
 Network Ops/Syst Sec
 Aviation Maintenance
 Avionics
 Professional Pilot
 BAS Op. Management
 BAS META
 Mechatronics
 Nondestructive Testing
 Manufacturing Tech.

Faculty Leads
 Aerospace/Aviation
 Greg Doyon
 Advanced Manufacturing
 Julie Watts

SHC Support Staff
 Tool Room Tech:
 Lucy Schmidt
 Aircraft Mechanic: Matt
 Selstad
 Avia. Prog. Specialist:
 Terrie Shanko

Adv. Manufacturing
 Lab Tech: Ian Brandt
 Navigator: Eden Greer

BAS Program Support
 Career Pathway Specialist
 Kristen Bate

Programs
 Auto Collision/
 Restoration
 Automotive Tech.
 Construction Tech.
 Low Voltage
 Electrician
 HVAC/Refrigeration
 Service Tech.
 Upholstery
 Welding
 Apprenticeship
 Development
 Perkins

**Automotive Support
 Staff**
 Tool Room Tech: Jim
 Newcomer

Programs
 Accounting
 Cosmetology
 Culinary Arts
 Esthetic Science
 Massage Studies
 (inactive)
 Pastry Arts

Retail Bus. Mgmt.
 Early Care &
 Education
 Day-care affil's

Support Staff
 Receptionist:
 Kim Brown
 Cashier:
 Michelle Bishop

Programs
 Central
 Service/Sterile
 Processing
 Dental Assistant
 Health Unit Coord.
 Human Services
 Med. Histology Tech.
 Medical Lab Tech.
 Pharmacy Tech.
 Medical Assistant
 Surgical Tech.
 Core Allied Health

Faculty Lead
 Taylyr Breiner

Support Staff
 Clinical Placement
 Coordinator
 Josie Meyer
 Histology lab tech
 Pharmacy lab tech
 Surg. Tech lab
 assistant

Programs
 Nursing Assistant
 Practical Nursing
 Registered Nursing

Faculty Lead
 Irada Dadashova

Support Staff
 Nursing Placement
 Coordinator
 Judy Rose-Bungay
 (PT)
 Director of NAC
 Rosalia Watson
 (adjunct)

Programs
 English Language
 Acquisition (ESL)
 HS + DIPLOMA
 GED
 Brush-Up Adult Ed
 I-BEST

Faculty Lead
 Diane Follett

Support Staff
 Data Specialist:
 Samanda Roman
 LEP Specialist:
 Eun Ha Lee
 LEP Specialist:
 Larysa Nazarenko
 Navigator:
 Felicia Dennis
 Counselor:
 Riabelle Vivas
 Entry Services: vacant
 PT ESL Support:
 Koffi Monde

**NORTHWEST
 CAREER &
 TECHNICAL HIGH
 SCHOOL (NWCTHS)**

Support Staff
 Associate Director:
 Amy Robertson-Bullen
 Faculty Office Assistant:
 Stephanie Castillo
 Entry Services:
 Jessica Vazquez
 Counselors:
 Sean Briggs, Jane Davis,
 Megan Fuhlman