



Organizational Chart
rev. 06/12/24

Dr. Joyce Loveday
President

Thomas Oliver
Senior Executive Assistant

Amelia Grayson
Vice President for
Finance & Administration

- Budget & Finance
- Campus Security
- ctcLink
- Information Technology
- Risk & Compliance
- Campus Bookstore
- Capital Projects
- Event Services
- Operations
- Payroll

Dr. James Neblett
Associate Vice President
for Human Resources &
Culture

- Human Resources

Dean Kelly
Vice President for
Student Success

- Advising & Counseling
- College Success
- Disability Services
- Outreach & Entry Services
- Student Life
- Testing & Reporting
- Workforce Development
- Child Development Services
- Community & Career Services
- Enrollment Services
- Student Aid & Scholarships
- Student Rights & Responsibilities
- Veterans Services

Iesha Valencia
Associate Vice President for
Equity, Diversity & Inclusion

- Inclusive Excellence & Belonging
- MOSAIC Center
- Male Engagement Center (MEC)
- Diversity Committee
- Center for Peer Mentorship

Samantha Dana
Associate Vice President for
Institutional Effectiveness

- Accreditation
- CPTC Foundation
- Grant Development
- Institutional Research
- Marketing & Communications

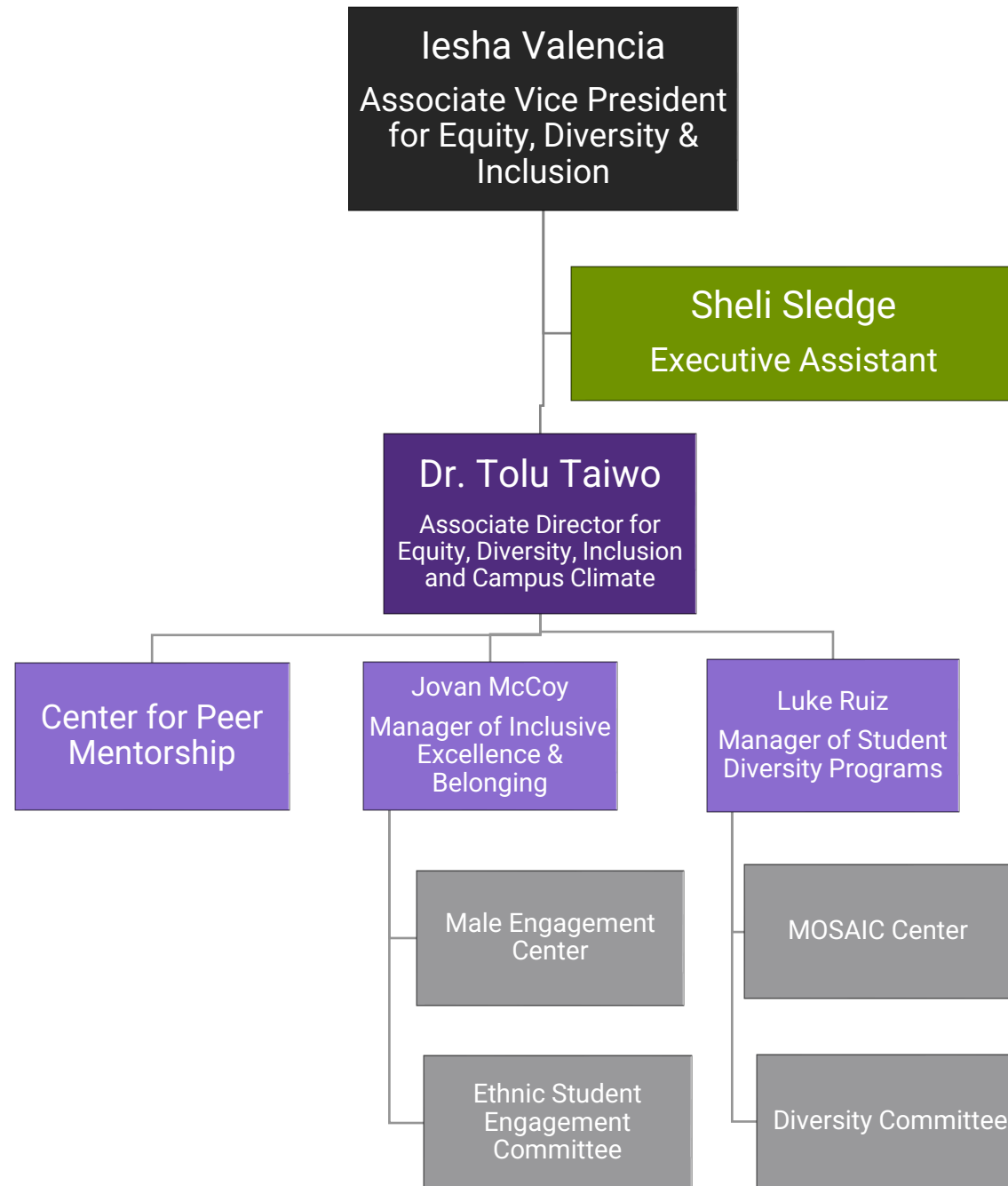
Dr. Tom Broxson
Vice President for
Instruction

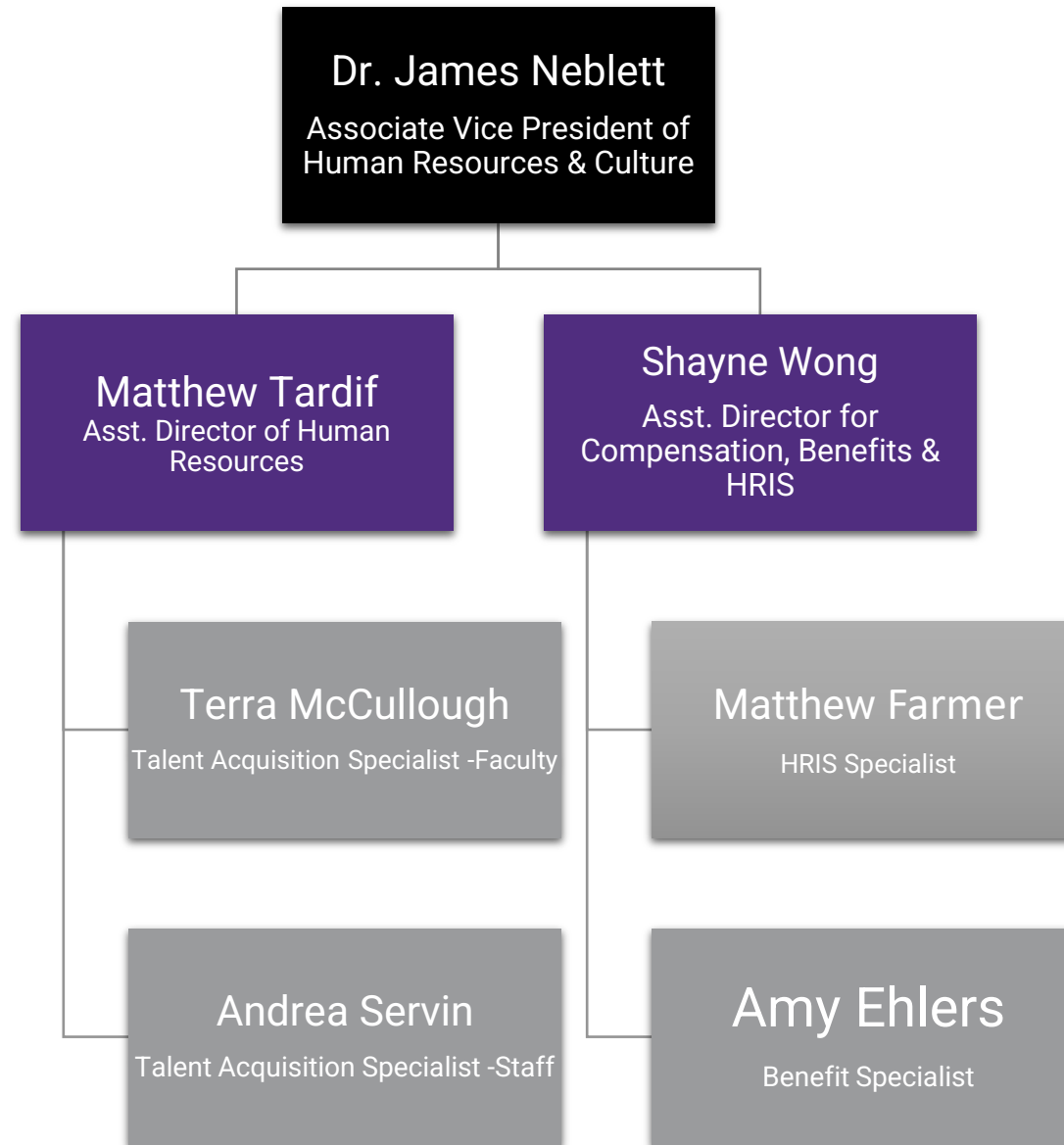
- School of Advanced Manufacturing
- School of Automotive & Trades
- School of Health & Human Development
- School of Science, Technology, Engineering & Design
- Learning Resource Center
- Outcomes & Assessment
- School of Aerospace and Aviation
- School of Business & Personal Services
- School of Nursing
- Pre-College Pathways
- Teaching & Learning Center

Board of Trustees
Jesus Villegas Rivera (Chair); Eli Taylor (Vice Chair); Carol Mitchell; Alice Phillips; Tong Zhu;



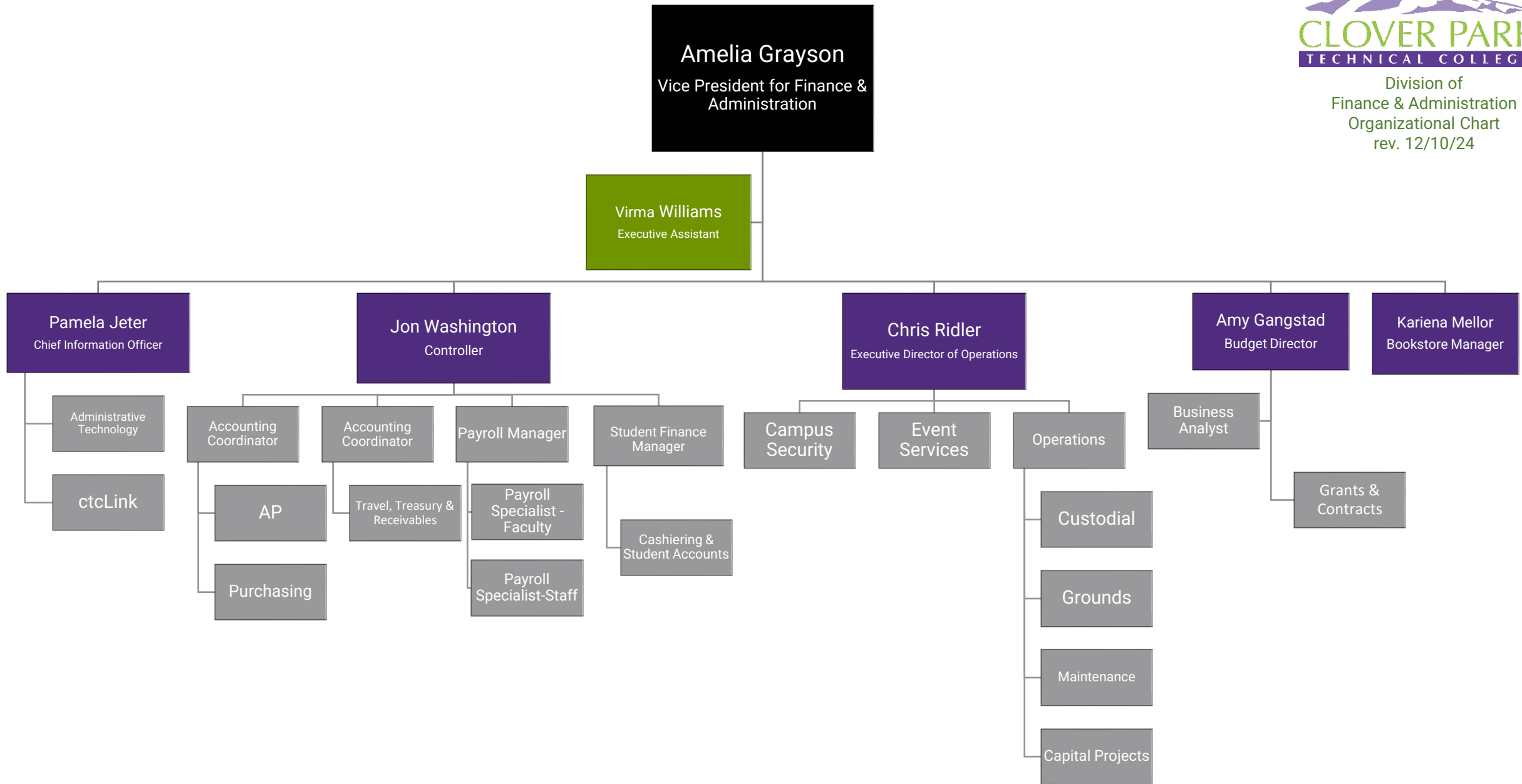
Division of
Equity, Diversity & Inclusion
Organizational Chart
rev. 11/4/24





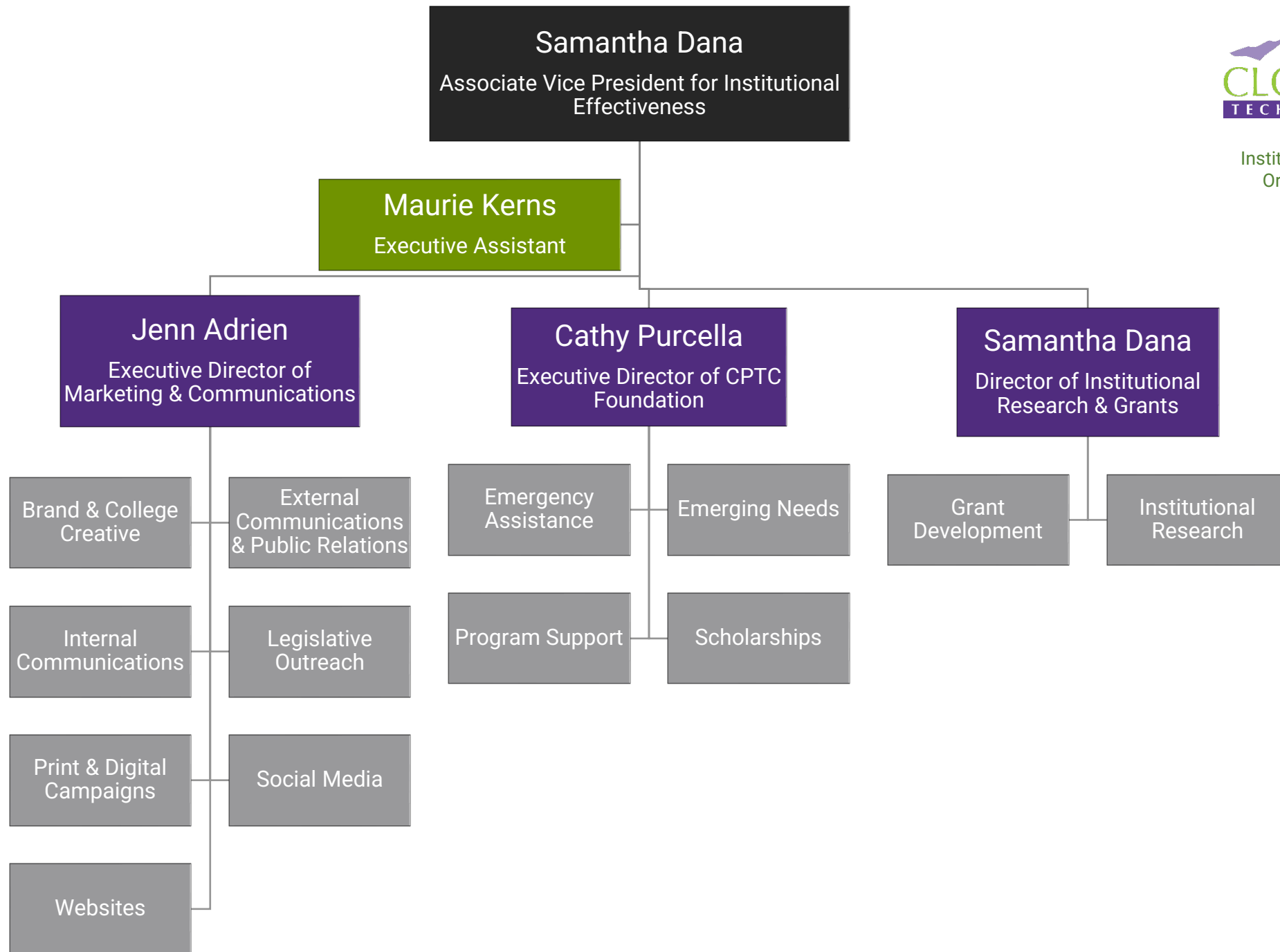


Division of
Finance & Administration
Organizational Chart
rev. 12/10/24



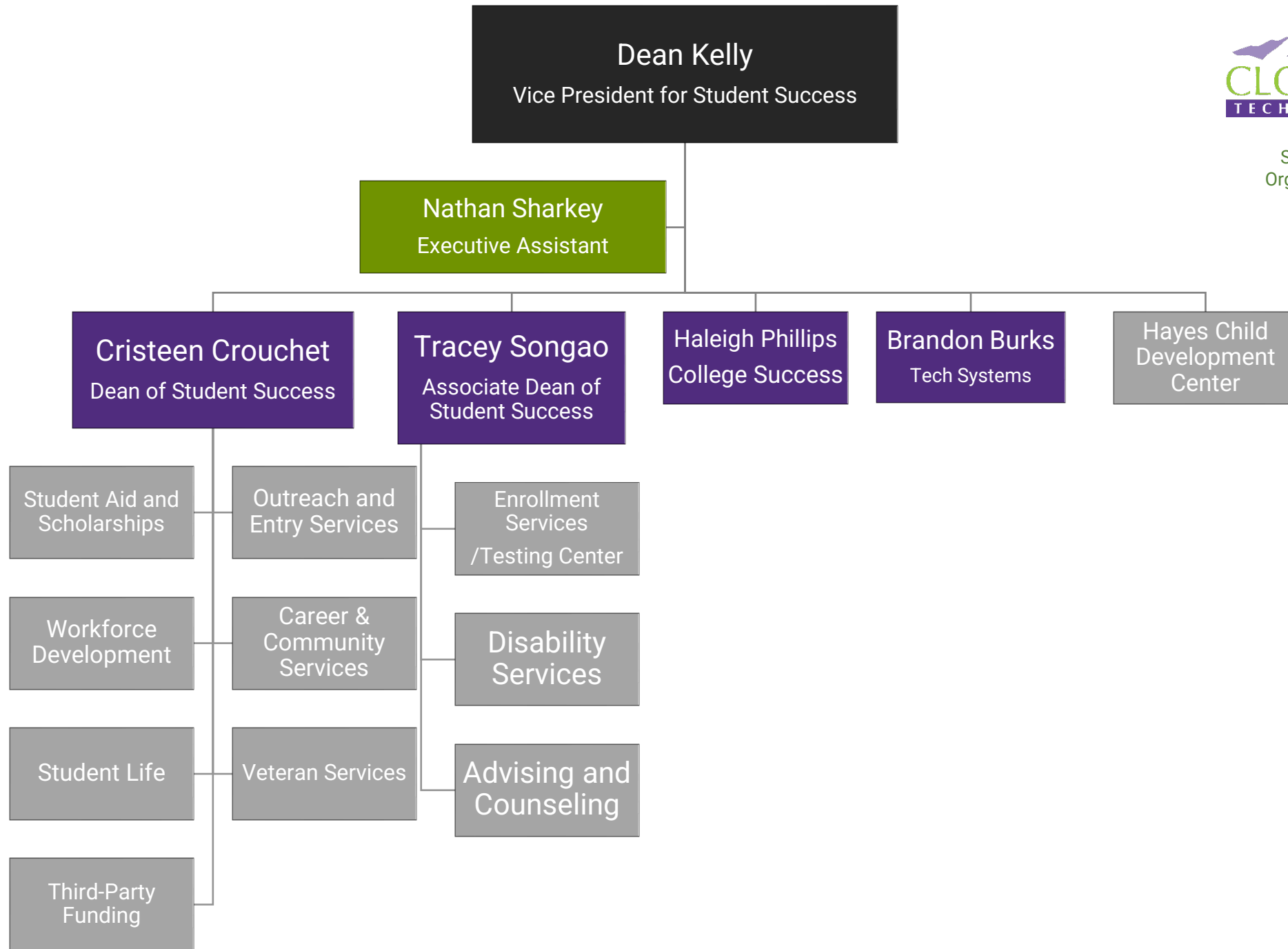


Division of
Institutional Effectiveness
Organizational Chart
rev. 05/17/2024





Division of
Student Success
Organizational Chart
rev. 01/16/25





Division of Instruction
Organizational Chart
rev. 1/27/2025

Vice President for Instruction Dr. Thomas Broxson

Dean of Library and Learning Innovation
Kristin Copeland
Curriculum Design

Instructional Program Asst
Carrie Foster

Specialists:
Geoff Cain, Ronald Lethcoe

Instructional Designer
James Schumate

LRC Staff
Faculty librarians
eLearning staff
Library Technicians
Computer Technology
Specialist

Faculty Leads:
Dionna Faherty
Shawn Geary
Dion Alexander (.5)

Student Technology
Coordinator
Sean Thompson

Tutoring Center Coord.
Dion Alexander
Tutoring Center Staff

**Outcomes & Assessment
Manager**
Dr. Xue (Snowy) Zhang

Faculty Leads
Alan Vargo
Derek Faust
Dion Alexander (.5)

Executive Assistant
Sarah Harris

Manager of Instruction Budget and Scheduling
Jaye Sullivan

Enrollment Data Specialist
Kristy Crosby

**Executive Director of the Center for
Professional Development**
Donald Sosnowski

Corporate Education
Donald Sosnowski

**Continuing
Professional Education**
Petra Perkins

**ACADEMICS &
DESIGN**
Dean of Instruction

Dr. Chris Chen
Mahoney

**AERO / AVIA /
MAIN / TECH**
Dean of Instruction

Dr. Claire
Korschinowski

**AUTOMOTIVE &
TRADES**
Dean of Instruction

Lester Burkes

**CLIENT & BUSINESS/
PERSONAL
SERVICES**
Dean of Instruction

Michelle Hillesland

HEALTHCARE
Dean of Instruction

Jason Boatwright

NURSING
Dean of Instruction

**Tiffany Smith-
Fromm**

**PRE-COLLEGE
PATHWAYS**
Dean of Instruction

Jenna Pollock

**Instructional
Program
Assistants**
Roxanne Sou
Theresa Whitehouse

**Instructional
Program Assistants**
Angela Alapai
Donna McBride -
South Hill Campus

**Instructional
Program
Assistant**
Lisa Plair

**Instructional
Program
Assistant**
Bijou Boerst

**Instructional
Program
Assistant**
Christina Fontana

**Instructional
Program
Assistant**
Sean McCullough

**Instructional
Program
Assistants**
Brittany Bowman
Karina Calzada

Programs
Arts & Humanities
Computer
Applications
English &
Communications
Mathematics
Natural Sciences
Social Sciences
DTA degrees

Architctural
Engineering Design
Design & Production
Graphic Design Tech.
Interior Design
BAS Interior Design

Support Staff
Bio lab tech
Chem lab tech

Programs
BAS Cybersecurity
BS Computer Science
Computer Prog.
BAS Environmental
Sciences
Environ. Sci. & Tech.
Network Ops/Syst Sec
Aviation Maintenance
Avionics
Professional Pilot
BAS Op. Management
BAS META
Mechatronics
Nondestructive Testing
Manufacturing Tech.

Faculty Leads
Aerospace/Aviation
Greg Doyon
Advanced Manufacturing
Julie Watts

SHC Support Staff
Tool Room Tech:
Lucy Schmidt
Aircraft Mechanic: Matt
Selstad
Avia. Prog. Specialist:
Terrie Shanko

Adv. Manufacturing
Lab Tech: Ian Brandt
Navigator: Eden Greer

BAS Program Support
Career Pathway Specialist
Kristen Bate

Programs
Auto Collision/
Restoration
Automotive Tech.
Construction Tech.
Low Voltage
Electrician
HVAC/Refrigeration
Service Tech.
Upholstery
Welding
Apprenticeship
Development
Perkins

**Automotive Support
Staff**
Tool Room Tech: Jim
Newcomer

Programs
Accounting
Cosmetology
Culinary Arts
Esthetic Science
Massage Studies
(inactive)
Pastry Arts

Retail Bus. Mgmt.
Early Care &
Education
Day-care affil's

Support Staff
Receptionist:
Kim Brown
Cashier:
Michelle Bishop

Programs
Central
Service/Sterile
Processing
Dental Assistant
Health Unit Coord.
Human Services
Med. Histology Tech.
Medical Lab Tech.
Pharmacy Tech.
Medical Assistant
Surgical Tech.
Core Allied Health

Faculty Lead
Taylyr Breiner

Support Staff
Clinical Placement
Coordinator
Josie Meyer
Histology lab tech
Pharmacy lab tech
Surg. Tech lab
assistant

Programs
Nursing Assistant
Practical Nursing
Registered Nursing

Faculty Lead
Irada Dadashova

Support Staff
Nursing Placement
Coordinator
Tassee Bell
(PT)
Director of NAC
Rosalia Watson
(adjunct)

Programs
English Language
Acquisition (ESL)
HS + DIPLOMA
GED
Brush-Up Adult Ed
I-BEST

Faculty Lead
Diane Follett

Support Staff
Data Specialist:
Samanda Roman
LEP Specialist:
Eun Ha Lee
LEP Specialist:
Larysa Nazarenko
Navigator:
Felicia Dennis
Counselor:
Riabelle Vivas
Entry Services: vacant
PT ESL Support:
Koffi Monde

**NORTHWEST
CAREER &
TECHNICAL HIGH
SCHOOL (NWCTHS)**

Support Staff
Associate Director:
Amy Robertson-Bullen
Faculty Office Assistant:
Stephanie Castillo
Entry Services:
Jessica Vazquez
Counselors:
Sean Briggs, Jane Davis,
Megan Fuhlman